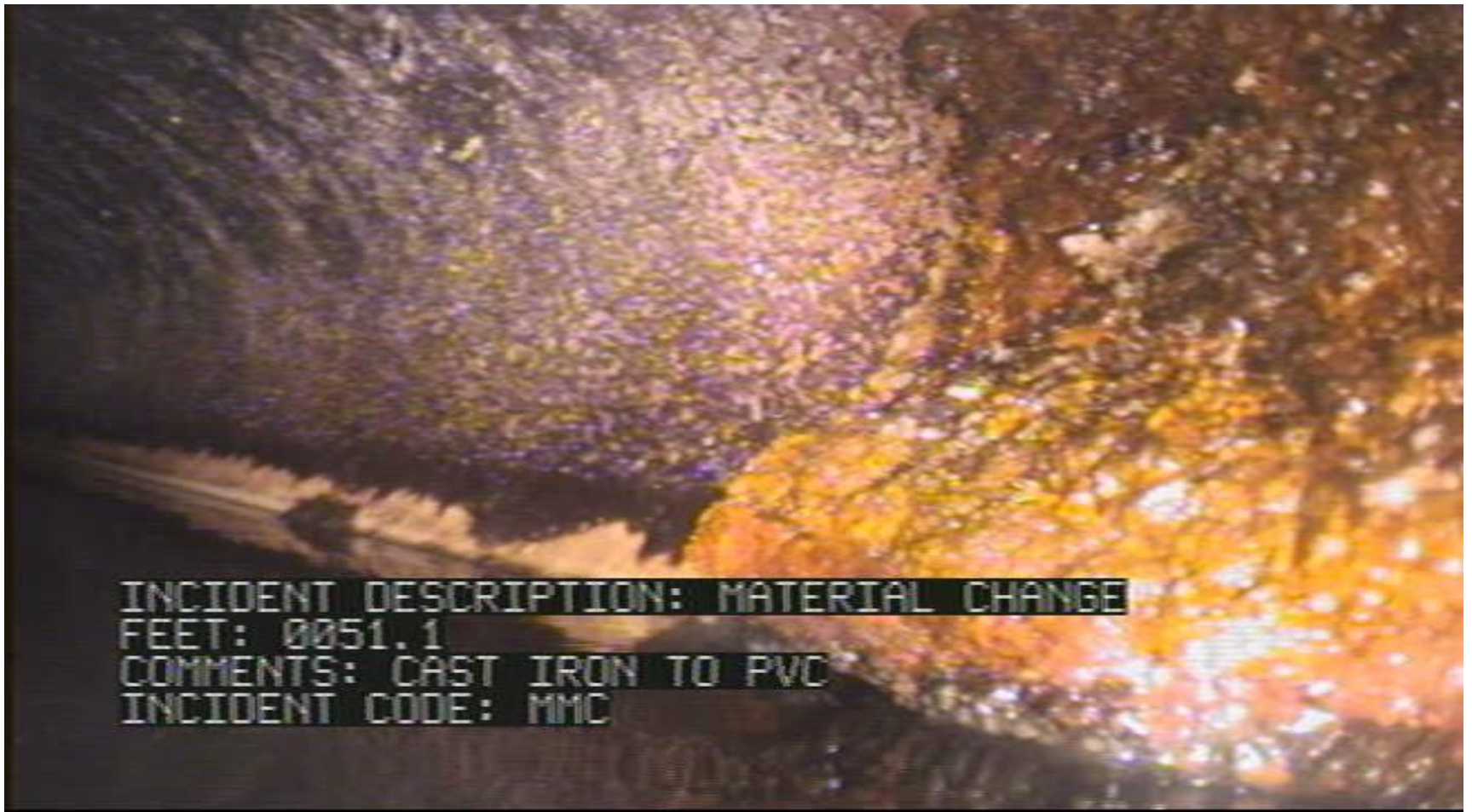


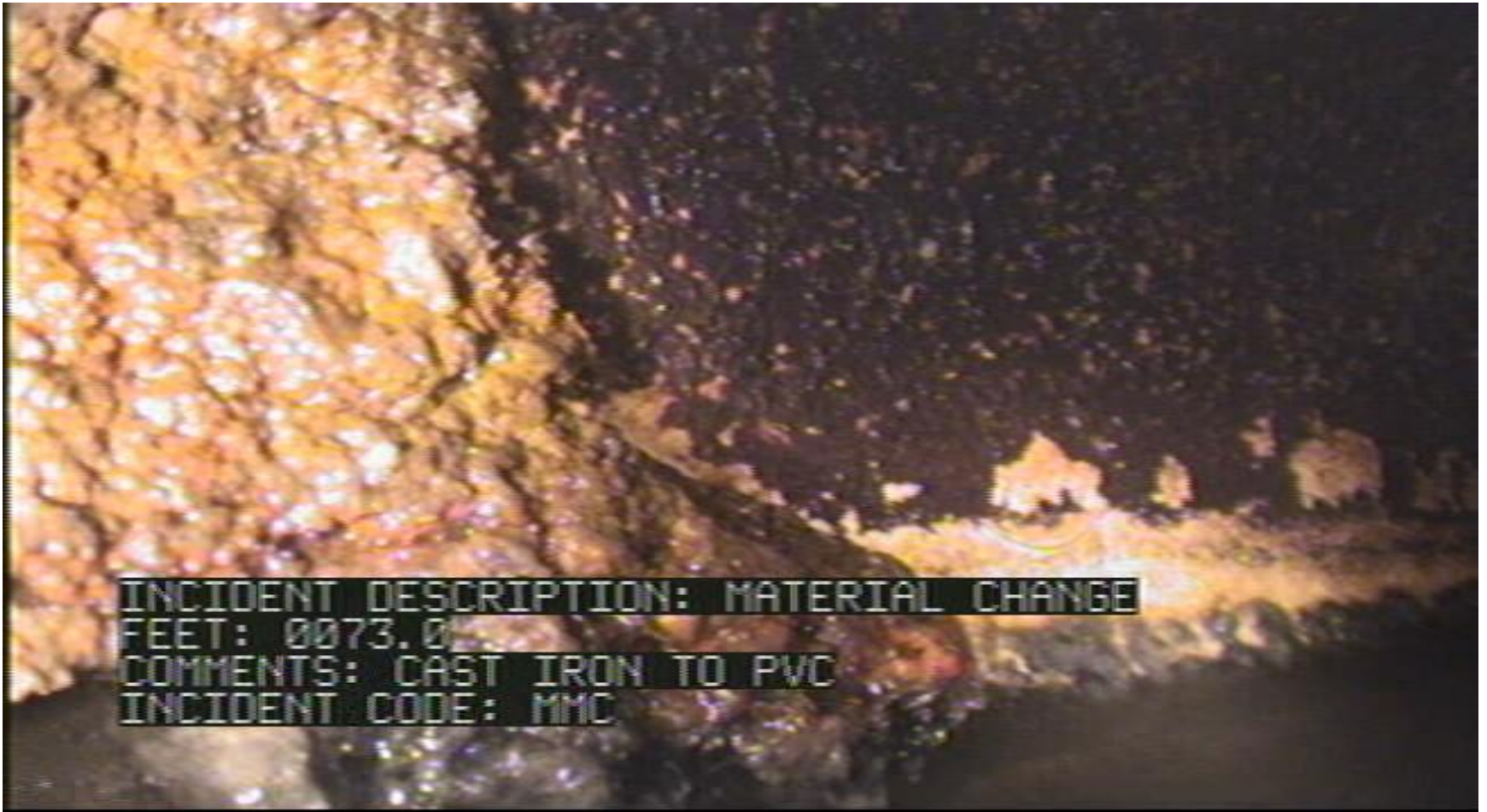
Transition CI to PVC



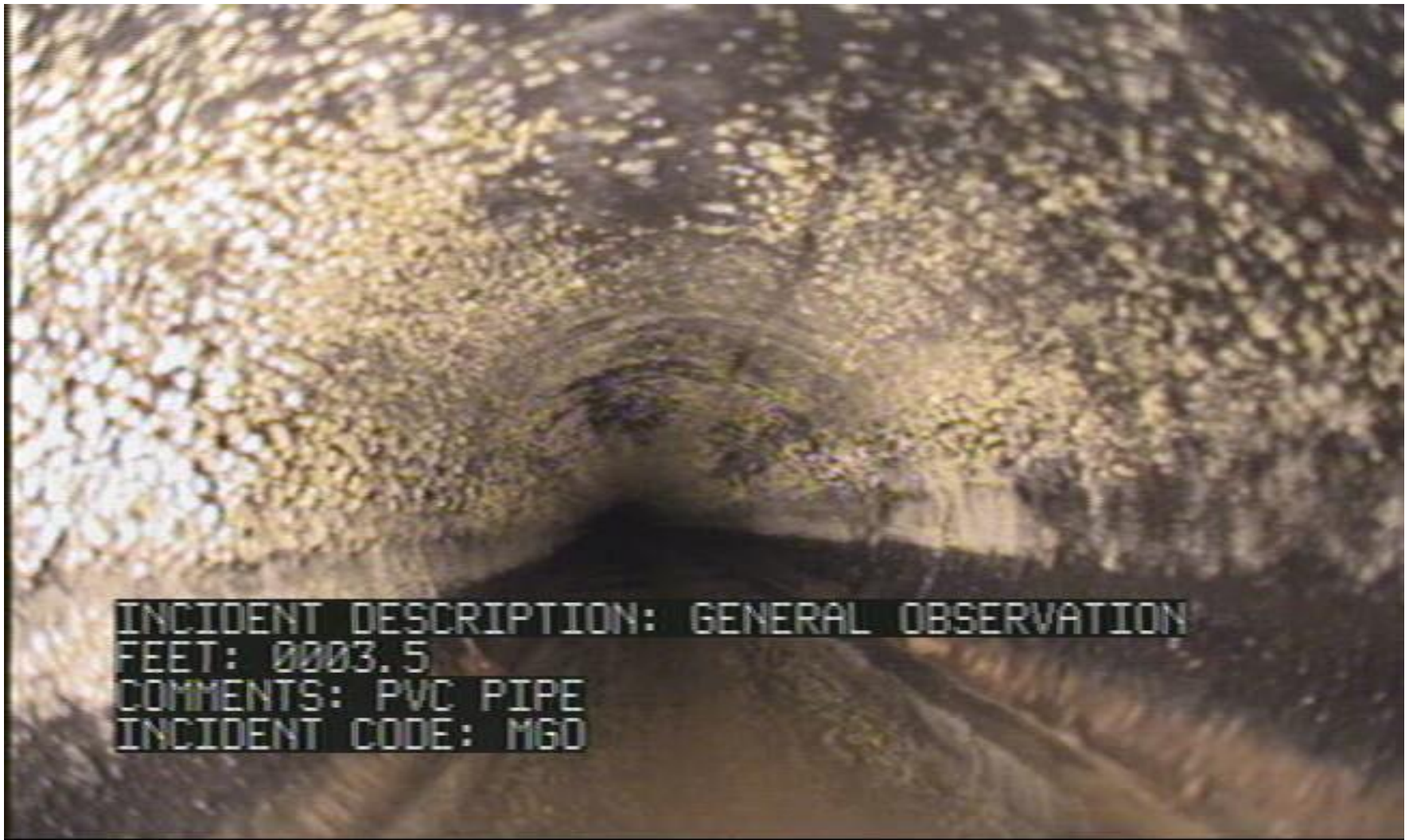
Close up CI to PVC



WO19-WO18 CI to PVC



PVC tie-in to WO 21 from Steakhouse

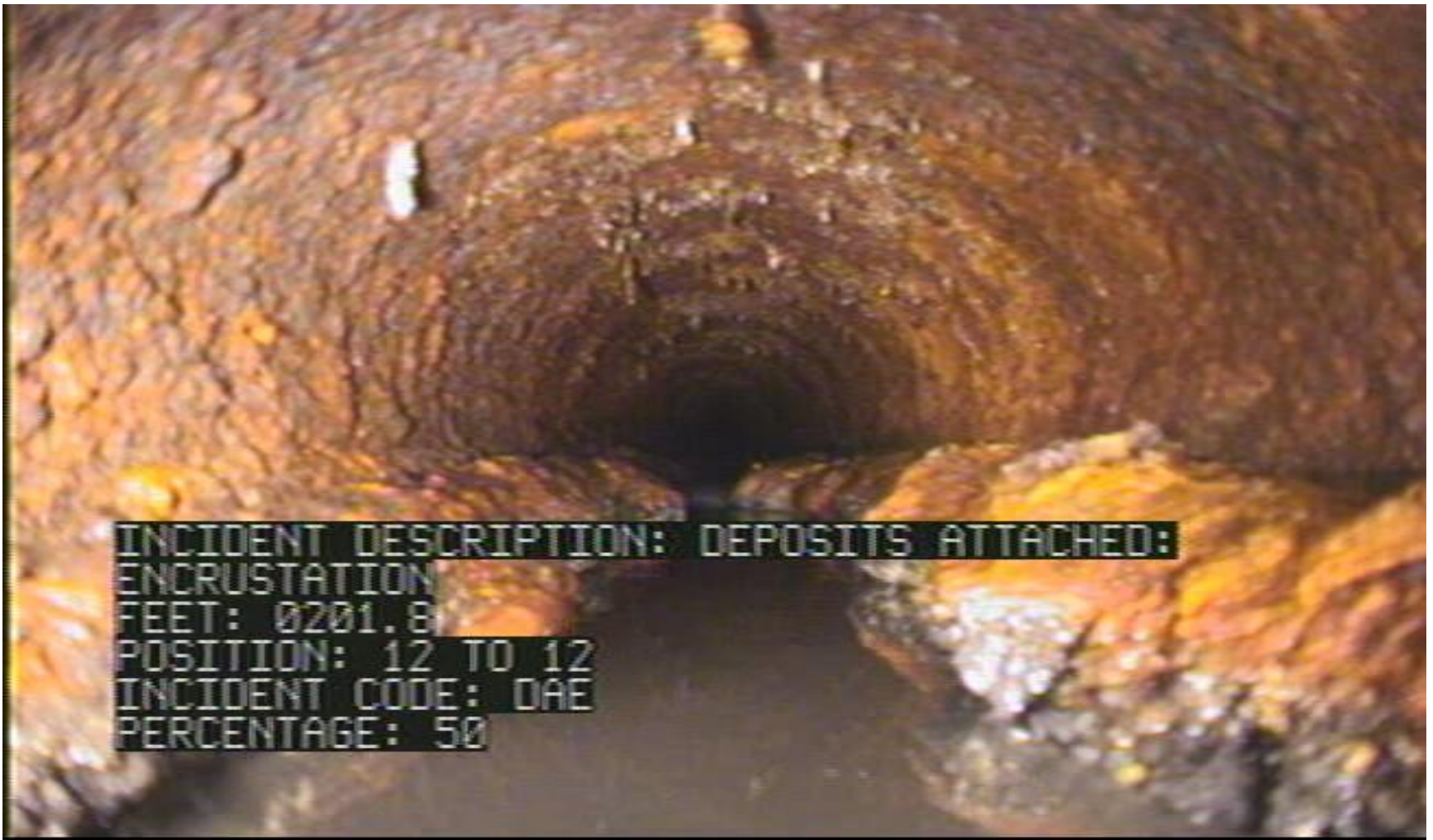


INCIDENT DESCRIPTION: GENERAL OBSERVATION
FEET: 0003.5
COMMENTS: PVC PIPE
INCIDENT CODE: M60

WO19 to WO20 Heavy Rust Encrustation



WO 20 to WO 19 Heavy Encrustation with flow channel



INCIDENT DESCRIPTION: DEPOSITS ATTACHED:
ENCrustATION
FEET: 0201.8
POSITION: 12 TO 12
INCIDENT CODE: OAE
PERCENTAGE: 50