



# MONTHLY OPERATIONS REPORT

## March 2019

Town of Discovery Bay, CA

**3503** Days of Safe Operations

**172,458** worked hours since last recordable incident

# TRAINING: Safety, Operations, & Equipment

## \* TRAINING:

- • Safety
  - West Monthly Regional Safety Webinar
  - LOTO
  
- Operation
  - None this Month

# **REPORTS SUBMITTED TO REGULATORY AGENCIES**

- \* Monthly Discharge Monitoring Report (DMR)**
- \* Monthly electronic State Monitoring Report (eSMR)**
- \* Monthly Coliform Report, State Water Board (WD)**
- \* Annual Bio-Soilds Report (EPA)**

# WATER SERVICES

## Groundwater Well:

- 1B - Active
- 2 – under rehab
- 4 – under rehab
- 5B - Active (Standby only)
- 6 – Active
- 7 - Active

## 2019 Water Production Table (MG) by Month

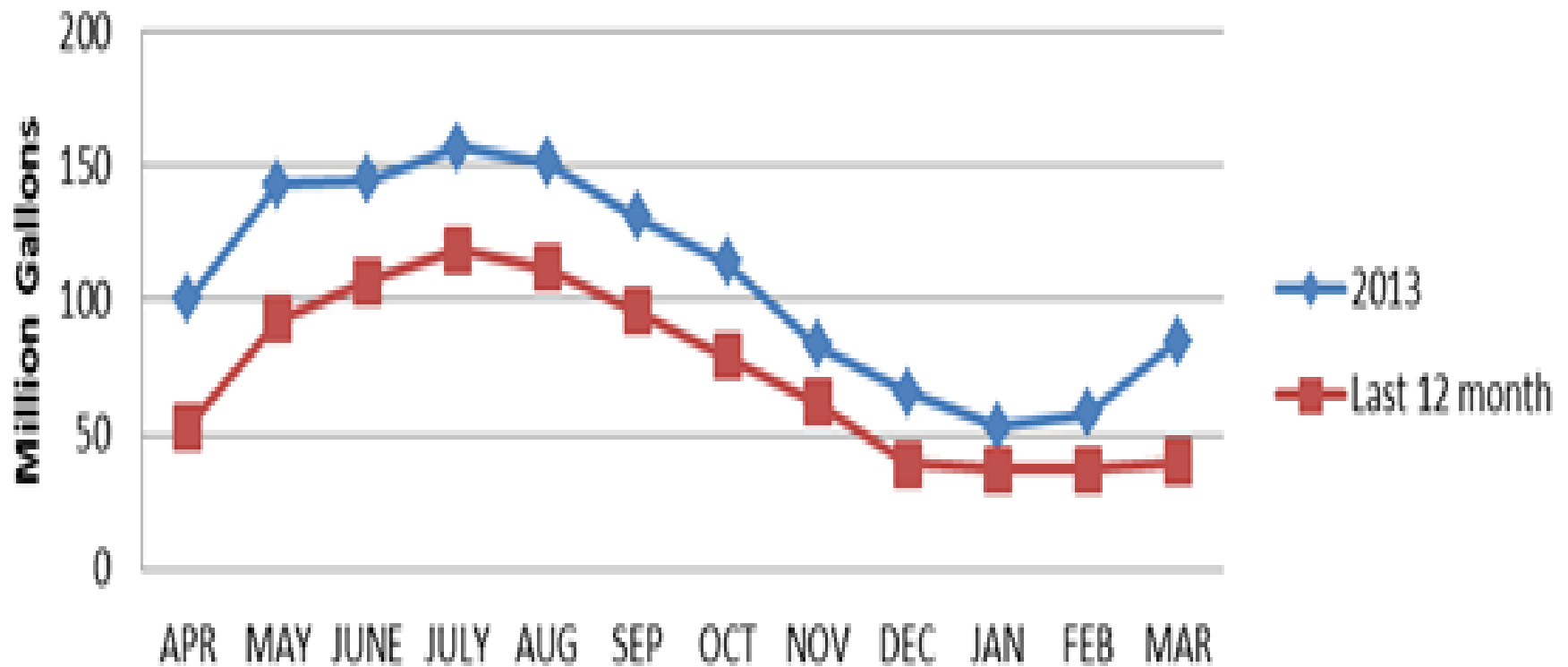
January	February	March	April	May	June
37	37	40			
July	August	September	October	November	December

## Bacteriological Test Results

Routine Bacteria Samples Collected	No. Total Coliform Positives	No. Fecal/E. coli Positives	Brown Water Calls	Fire Hydrant Flushing
• 16	• 0	• 0	• 0	• 0

# WATER USAGE

## Water Production



# Water Saved

## Reduction Compared to 2013



# WASTEWATER SERVICE

## Wastewater Laboratory Analysis

<i>WW Effluent Parameter</i>	<i>Permit Limits</i>	<i>Feb Lab Data</i>	<i>Mar Lab Data</i>
Flow, MG Effluent, <b>monthly total</b>	██████████	35	34
Flow, MG Daily Influent Flow, <b>avg.</b>	N/A	1.5	1.3
Flow, MG Daily Discharge Flow, <b>avg.</b>	2.1	1.3	1.1
Effluent BOD <sub>5</sub> , lbs/d, <b>monthly avg.</b>	390	11	11
Effluent TSS, lbs/d, <b>monthly avg.</b>	200*	8	10
Effluent BOD <sub>5</sub> , mg/L, <b>monthly avg.</b>	20	1	1
Effluent TSS, mg/L, <b>monthly avg.</b>	10*	1	1
Total Coli form 7 day Median Max	23	ND	ND
Total Coli form Daily Maximum	240	79	2
% Removal BOD <sub>5</sub> , monthly avg.	85% min.	99%	99%
% Removal, TSS, monthly avg.	85% min.	99%	99%
Electrical Conductivity, umhos/cm <b>annual avg.</b>	2100	2170	2200

\* New Limit

# WASTEWATER SERVICE

## \* National Pollution Discharge Elimination System (NPDES)

NPDES Related Excursions	Permit Parameter	NPDES Parameter Limit	Actual Parameter Result
• 0	• N/A	• N/A	• N/A

## COLLECTION:

# of Active Lift Stations	# of Inactive Lift Stations	SSO	Wastewater Received (MG)
15	0	0	39



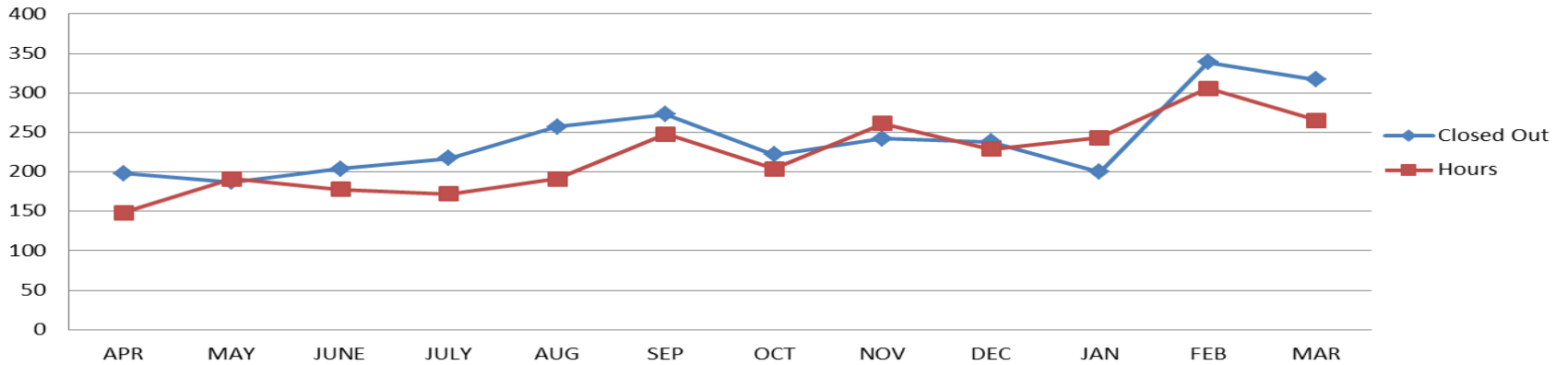
# WASTEWATER SERVICE

- \* Continue sanitary sewer line assessment (53,753)
- \* Flushed/CCTV will be performed after assessment
- \* Manhole & covers inspection during assessment (217).

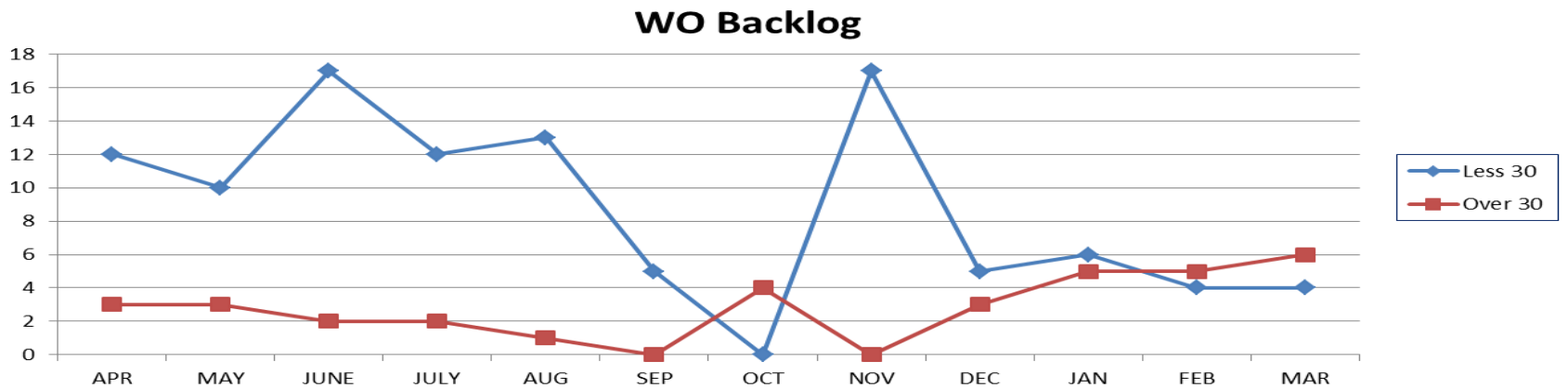
# Maintenance

## Preventive and Corrective

### Work Orders



### Work Order Back-Log



# General Info

## Call & Emergency Responses

Call Outs

6

Emergencies

0

## Personnel Hours & Overtime:

Regular Hours

1440

Overtime

26

# TERMS

WWTP

WASTEWATER TREATMENT PLANT

WTP

WATER TREATMENT PLANT

WL

WILLOW LAKE

NP

NEWPORT

VFD

VARIABLE FREQUENCY DRIVE

WO

WORK ORDER

PLC

PROGRAMMABLE LOGIC CONTROLLER

L/S

LIFT STATION

SSO

SANITARY SEWER OVERFLOW

BOD

BIOLOGICAL OXYGEN DEMAND

TSS

TOTAL SUSPENDED SOLIDS

MGD

MILLION GALLONS PER DAY

mg/l

MILLIGRAMS PER LITRE

CCTV

CLOSED CIRCUIT TELEVISION

PPM

PARTS PER MILLION

RAS

RETURN ACTIVATED SLUDGE

WAS

WATSE ACTIVATED SLUDGE

UV

ULTRAVIOLET LIGHT