

[About \(/about\)](#) [Team \(/team\)](#) [Careers \(/careers\)](#) [Blog \(/blog\)](#) [Newsletter \(/newsletter\)](#)

 (https://www.youtube.com/channel/UC756_xFiOavmKop-8eV5ltA)  (<https://twitter.com/medoraco>)
 (<https://www.linkedin.com/company/medora-corporation-gridbee-solarbee>)



◦ [Home \(/\)](#)

▼ [Applications \(/applications\)](#)

- ▼ [Potable Water Systems](#) (/applications/potable-water-systems)
 - [THM & VOC Reduction In Tanks \(/applications/potable-water-systems/distribution-system-chlorine/thm-reduction\)](#)
 - [THM & VOC Reduction In Clearwells \(/applications/potable-water-systems/water-treatment-plant/thm-reduction-clearwells\)](#)
 - [Complete Tank Mixing \(Chlorine\) \(/applications/potable-water-systems/distribution-system-chlorine/complete-potable-tank-mixing\)](#)
 - [Complete Tank Mixing \(Chloramine\) \(/applications/potable-water-systems/distribution-system-chloramine/complete-potable-tank-mixing\)](#)
 - [Ice Prevention In Tanks \(/applications/potable-water-systems/distribution-system-chlorine/ice-prevention\)](#)
 - [Disinfectant Boosting \(/applications/potable-water-systems/distribution-system-chlorine/disinfectant-boosting\)](#)
 - [Improving CT, Reduced Chlorine Usage & THM Formation \(/applications/potable-water-systems/water-treatment-plant/improving-ct-reduced-chlorine-usage-thm\)](#)
 - [Improved Mixing In Rapid Mix Basins \(/applications/potable-water-systems/water-treatment-plant/improved-mixing-rapid-mix-basins\)](#)
 - [Nitrification \(Chloramine\) \(/applications/potable-water-systems/distribution-system-chloramine/nitrification\)](#)
 - [Potable Mega Reservoirs \(30+MG\) \(/applications/potable-water-systems/potable-mega-reservoirs-30mg\)](#)
- ▼ [Lakes & Raw Water Reservoirs](#) (/applications/lakes-raw-water-reservoirs)
 - [Raw Water Reservoir \(/applications/lakes-raw-water-reservoirs/raw-water-reservoir\)](#)
 - [Recreation \(/applications/lakes-raw-water-reservoirs/recreation\)](#)
 - [Small Lakes & Ponds \(/applications/lakes-raw-water-reservoirs/small-lakes-ponds\)](#)
- ▼ [Wastewater Systems](#) (/applications/wastewater-systems)
 - [Activated Sludge \(/applications/wastewater-systems/activated-sludge\)](#)
 - [Lagoon Systems \(/applications/wastewater-systems/lagoons\)](#)
 - [Equalization Ponds \(/applications/wastewater-systems/equalization-ponds\)](#)
 - [Wet Wells / Lift Stations \(/applications/wastewater-systems/wet-wells-lift-stations\)](#)
- ▶ [Stormwater Retention Basins \(/applications/stormwater-retention-basins\)](#)
- ▼ [Water Re-Use](#) (/applications/water-re-use)
 - [Open Reservoirs \(/applications/water-re-use/open-reservoirs\)](#)
 - [Storage Tanks \(/applications/water-re-use/storage-tanks\)](#)
- ▶ [Industrial Water \(/applications/industrial-water\)](#)

▼ [Equipment \(/equipment\)](#)

- ▼ [SN Series THM & VOC Removal](#) (/equipment/sn-series-thm-removal-systems)
 - [SN15 \(/equipment/sn-series-thm-removal-systems/sn15\)](#)
 - [SN10 \(/equipment/sn-series-thm-removal-systems/sn10\)](#)
 - [SN5 \(/equipment/sn-series-thm-removal-systems/sn5\)](#)
 - [SN3 \(/equipment/sn-series-thm-removal-systems/sn3\)](#)
 - [SN In-Line Skid \(/equipment/sn-series-thm-removal-systems/sn-line-skid\)](#)
- ▼ [GS Series Submersible Mixers](#) (/equipment/gs-series-submersible-mixers)
 - [GS-12 \(/equipment/gs-series-submersible-mixers/gs-12\)](#)
 - [GS-9 \(/equipment/gs-series-submersible-mixers/gs-9\)](#)
 - [GS-A15 \(/equipment/gs-series-submersible-mixers/gs-a15\)](#)
- [SB Series Solar-Powered Mixers \(/equipment/sb-series-solar-powered-mixers\)](#)

(/equipment/aerationplus-lake-pond-circulators)

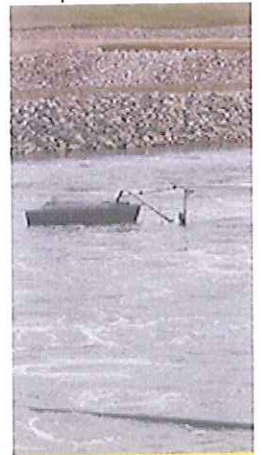
- ▼ AerationPlus Lake & Pond Circulators
 - Model 1800 (/equipment/ap-series/ap1800)
 - GF Series Grid-Powered Mixers (/equipment/gf-series-grid-powered-mixers)
 - AP Series Air-Powered Mixers (/equipment/ap-series-air-powered-mixers)
 - Accessory Equipment (/equipment/accessory-equipment)

◦ Resources (/resources)

the system has been doing well. Our machines have prevented odors and have prevented out of compliance for ammonia.

◦ Support (/support)

◦ Contact (/contact)



🏠 Medora Corporation (/) >> Equipment

EQUIPMENT

We help real-world people solve real-world problems.

All Medora Corporation equipment were developed because one of our Customers had a specific need or goal to be met. Everything we do, we do with our Customers in mind. We have been granted numerous patents with many, many more patents pending in over forty (40) countries on six (6) continents and continue to research & develop new technologies to help the world of water quality.

GridBee® SN Series THM Removal Systems

(/equipment/sn-series-thm-removal-systems)**Performance Guaranteed Or 100% Your Money Back!**

GridBee® SN Series THM Removal Systems from Medora Corporation are a trusted, proven, and guaranteed solution for trihalomethane removal in your water storage tanks or 100% your money back. Stage 2 DBPR compliance is now simple, quick, and affordable—no additional infrastructure—no draining tanks—no disruption in service. Industry leading GridBee® systems are energy efficient and completely scalable to fit your needs. The GridBee® SN Series is a "best on the market" solution. In-line THM removal options are also available.

[Learn more about SN Series THM Removal Equipment!](/equipment/sn-series-thm-removal-systems) (/equipment/sn-series-thm-removal-systems)

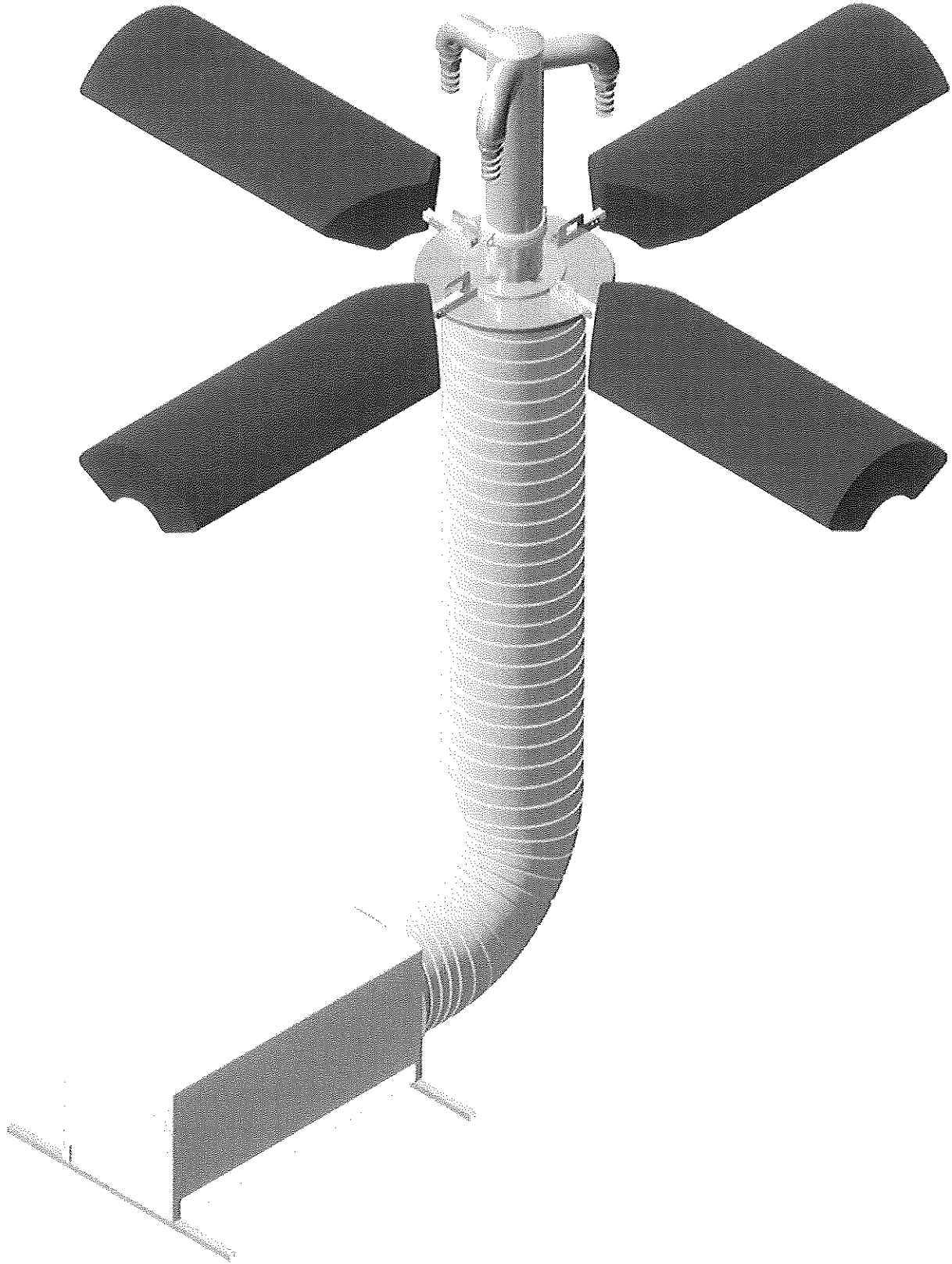
GridBee® GS Series Submersible Mixers

(/equipment/gs-series-submersible-mixers)Our GridBee® GS Series Potable Tank Mixers have fast become an industry standard known for its great mixing and ease of Customer deployment. It is by far the best mixing value available.

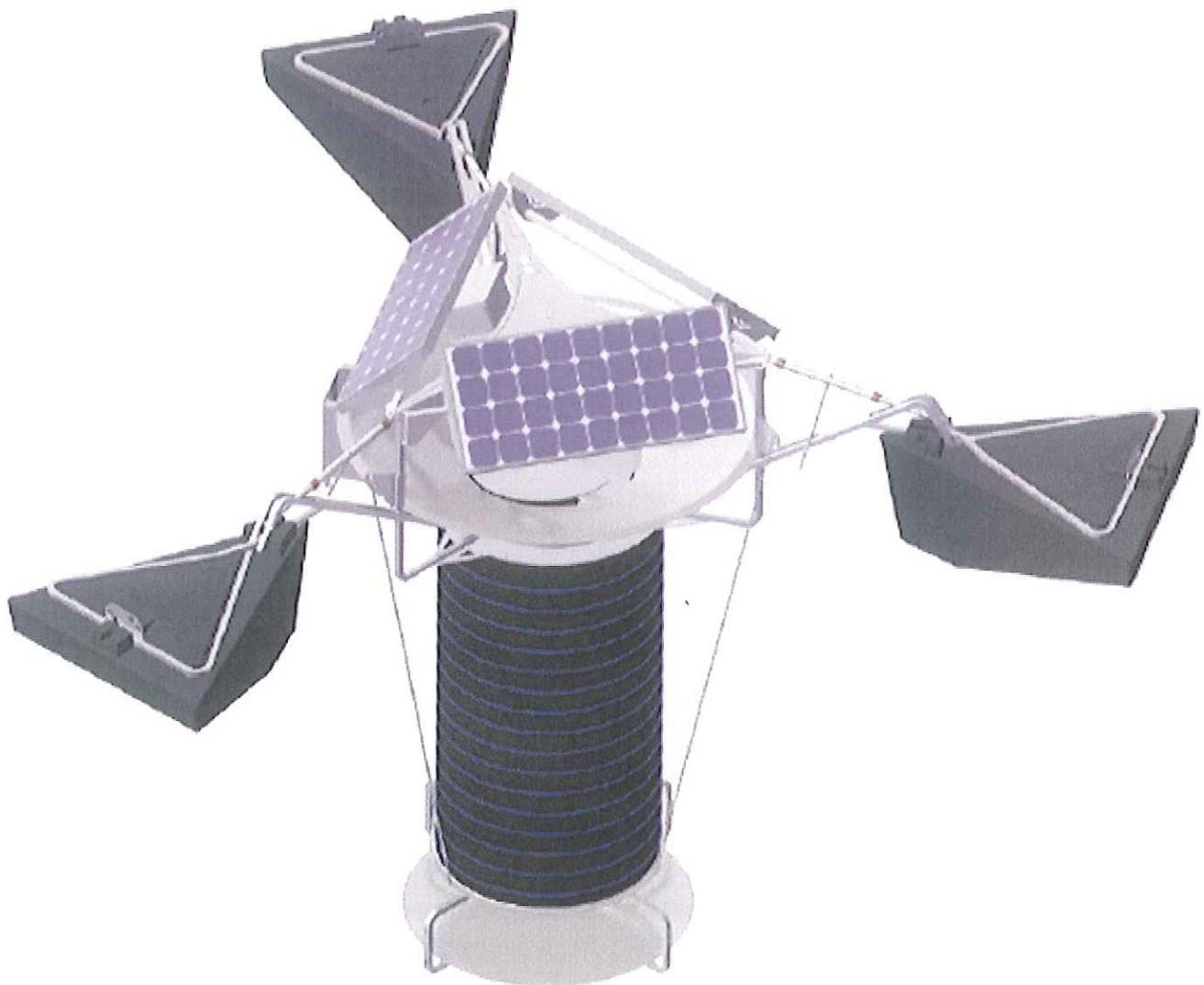
[Learn more about GS Series Potable Tank Mixing Equipment!](/equipment/gs-series-submersible-mixers) (/equipment/gs-series-submersible-mixers)

SolarBee® SB Series Solar Powered Mixers

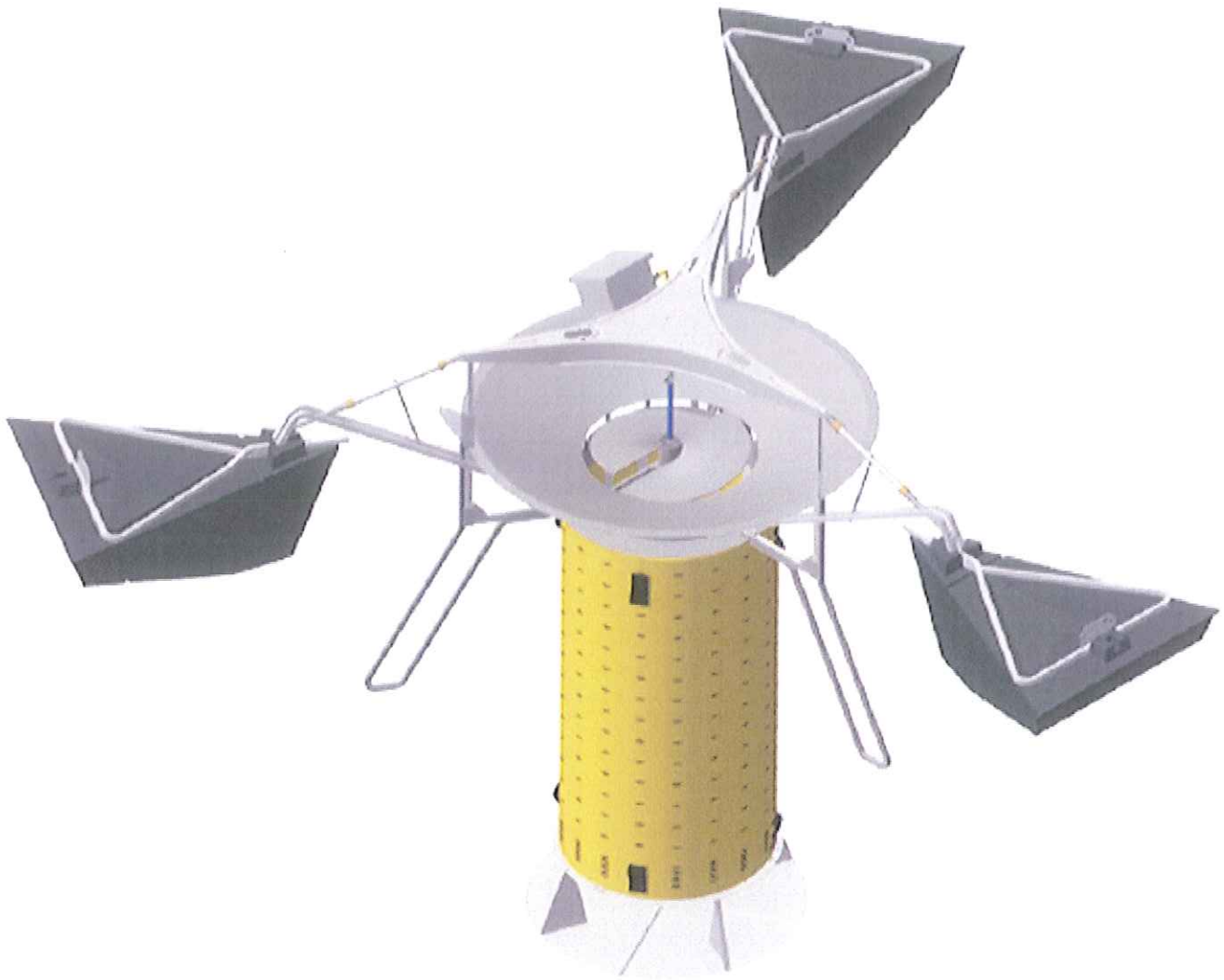
(/equipment/sb-series-solar-powered-mixers)Our SolarBee® SB Series solar-powered circulators are our flagship equipment with applications across all facets of the water quality improvement industry. These amazing circulators are a high flow, low energy solution from potable water tanks to freshwater lakes to stormwater & wastewater applications and are designed to operate 24 / 7 / 365 using only solar power!



[Learn more about our SB Series Mixing Equipment! \(equipment/sb-series-solar-powered-mixers\)](https://www.medoraco.com/equipment/sb-series-solar-powered-mixers)



GridBee® GF Series Grid Powered Mixers



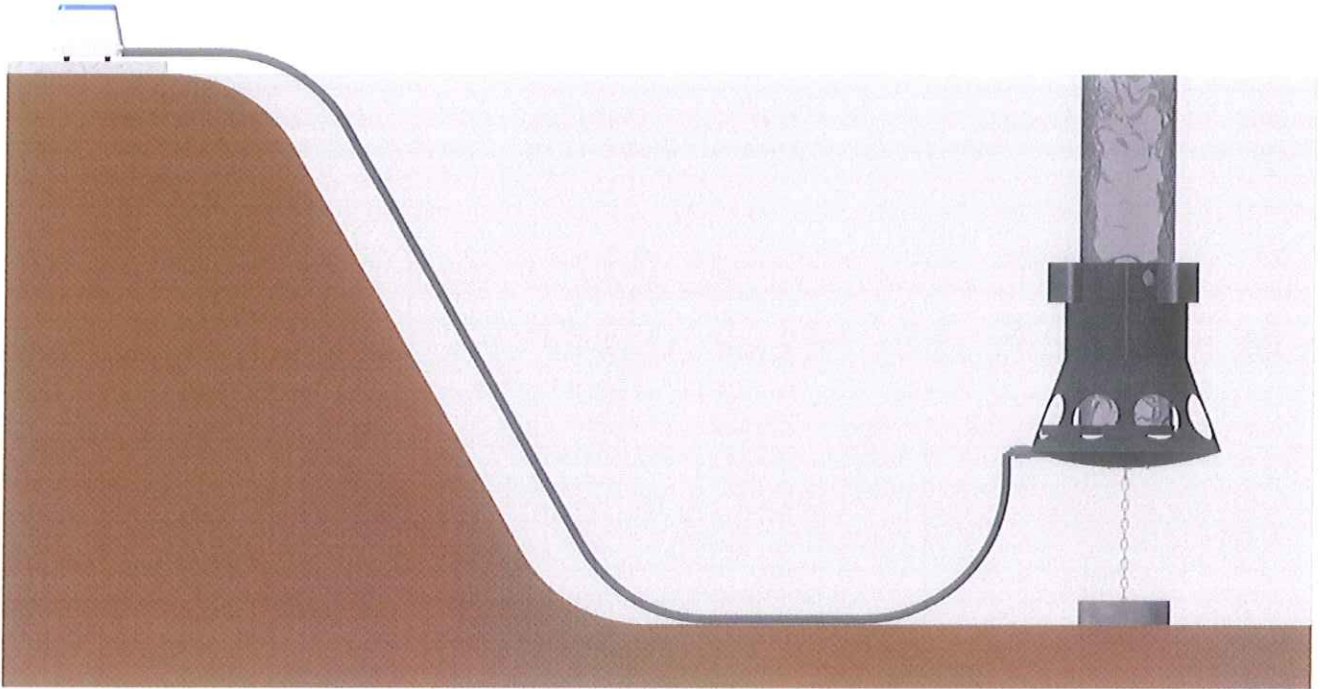
The GridBee® GF Series grid-powered circulators are a direct spin-off of our successful SolarBee line modified to use grid-power only. They are an even more cost-effective solution especially for smaller ponds where grid-power is readily available onsite. All the great SolarBee® mixing at a lower cost!

[Learn more about our GF Series Mixing Equipment!](#)

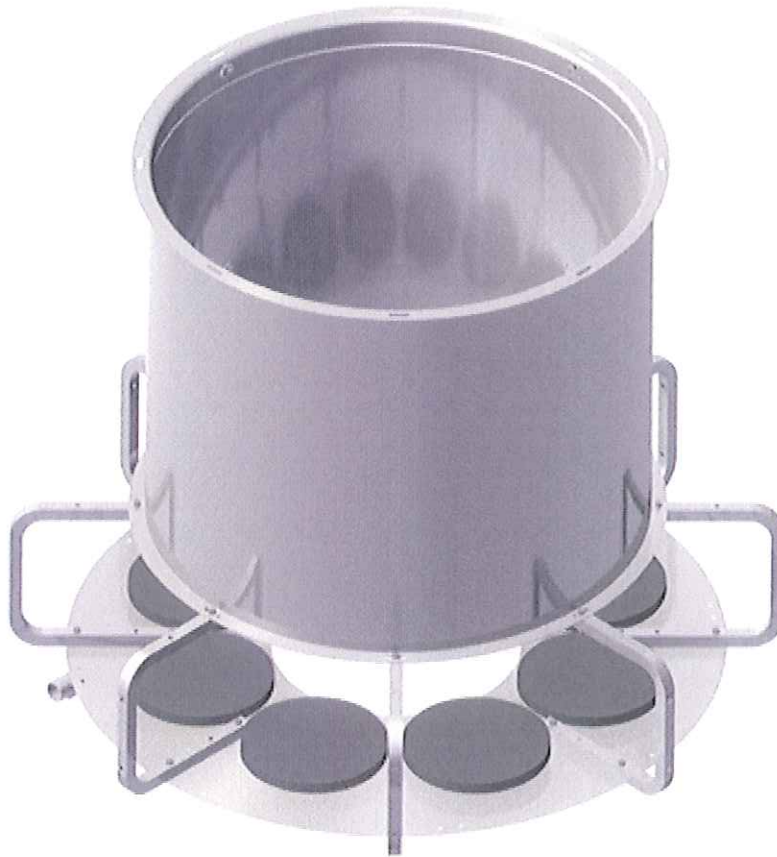
AerationPlus Lake & Pond Circulators

AerationPlus equipment creates beneficial circulation to help small lakes and ponds improve their overall water quality. This is an affordable option for any shoreline shareholder and works perfectly for docks and marinas, swimming areas, stormwater retention basins, and park & golf course ponds.

[Learn more about our AerationPlus Mixing Equipment!](#)



GridBee® AP Series Air Powered Mixers



[\(/equipment/ap-series-air-powered-mixers\)](#) Want an air-powered solution with no moving parts or electricity in the reservoir? Our GridBee® AP Series air-powered mixing equipment is a powerful, clog-free workhorse ready to mix in even the most confined spaces. Originally developed with Activated Sludge Systems in mind (including aerated and anoxic basins of all types and sizes.), this versatile equipment has no moving parts or electricity in the reservoir and is proving successful in other applications such as Lift Station Wet Wells and small ponds & stormwater.

[Learn more about our AP Series Mixing Equipment! \(/equipment/ap-series-air-powered-mixers\)](#)

We also offer [Accessory Equipment \(/equipment/accessory-equipment\)](/equipment/accessory-equipment) such as DBS-125 Disinfectant Boost System and the STH-8000 Submersible Tank Heater to help your operation be the best it can be.

Please explore specific equipment information below or [CONTACT US \(/contact\)](#) to discuss further how we can help!

EQUIPMENT

[SB Series Solar-Powered Mixers](#)

[GF Series Grid-Powered Mixers \(/equipment/gf-series-grid-powered-mixers\)](/equipment/gf-series-grid-powered-mixers)


[GS Series Submersible Water Storage Tank Mixers](#)

[SN Series THM & VOC Removal Systems](#)

[AerationPlus Lake & Pond Circulators \(/equipment/aerationplus-lake-pond-circulators\)](/equipment/aerationplus-lake-pond-circulators) [AP Series Air-Powered Mixers \(/equipment/ap-series-air-powered-mixers\)](/equipment/ap-series-air-powered-mixers)

[Accessory Equipment \(/equipment/accessory-equipment\)](/equipment/accessory-equipment)

SUPPORTING DOCUMENTS

 [Brochure- Mixing Equipment Options For Potable Water Storage Tanks \(/documents/brochure-mixing-equipment-options-potable-water-storage-tanks/download\)](/documents/brochure-mixing-equipment-options-potable-water-storage-tanks/download)

Copyright© 2017 Medora Corporation
1-866-437-8076 • 3225 Hwy 22, Dickinson, ND 58601