

Custom Modular Solutions

Your unique project is our quality solution.

Mobile Modular is a nationwide custom modular solutions provider. Our experts will partner with you every step of the way, from design to engineering to installation. We ensure your building is installed on time and within your budget. Our custom modular solutions are ideal for a wide range of applications and uses.



Custom Solutions for All Major Industries



Types of Custom Modular Solutions

- Classrooms
- Dormitories
- Administrative Space
- Courtrooms
- Government Offices
- Restrooms
- Medical Clinics
- Cafeterias
- And more!



Capabilities of Custom Modular Solutions

- Design Build
- Turnkey Services
- Sustainable Design
- Construction Management
- Foundation Design and Installation
- Utility Design and Installation
- Platforms, Ramps, Sidewalks
- Steps and Canopies
- Site Development
- Multiple Stories
- Customizable
- High-End Exterior and Interior Finishes



National Memberships & Affiliations

Sourcewell 

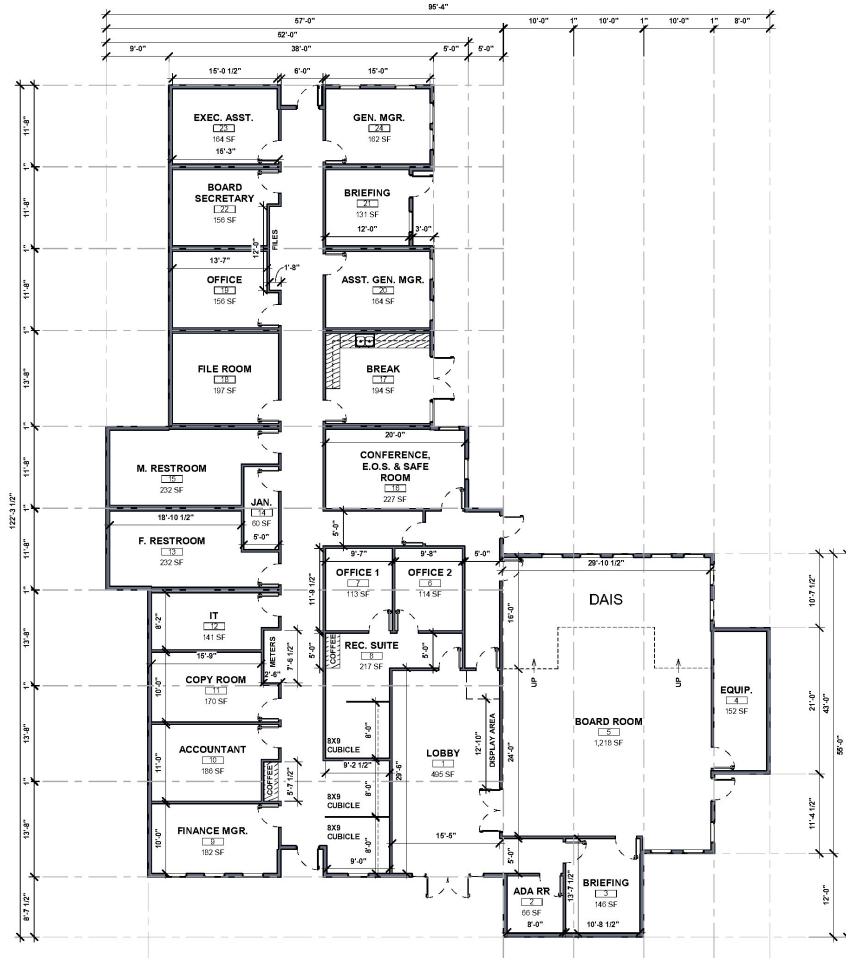
Awarded Contract

Contract # 120822-MMR



Town of Discovery Bay Offices – Option A

3D RENDERING DEPICTS APPROXIMATE LOOK OF FINISHES. FINAL SELECTIONS MAY VARY.



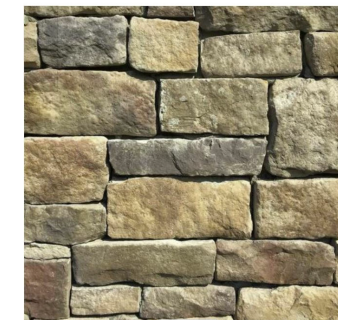
COPPER COLOR METAL ROOF



MAIN SIDING
HARDIE PANEL TEXTURED (SAND)



ACCENT SIDING
VERTICAL METAL (RED)

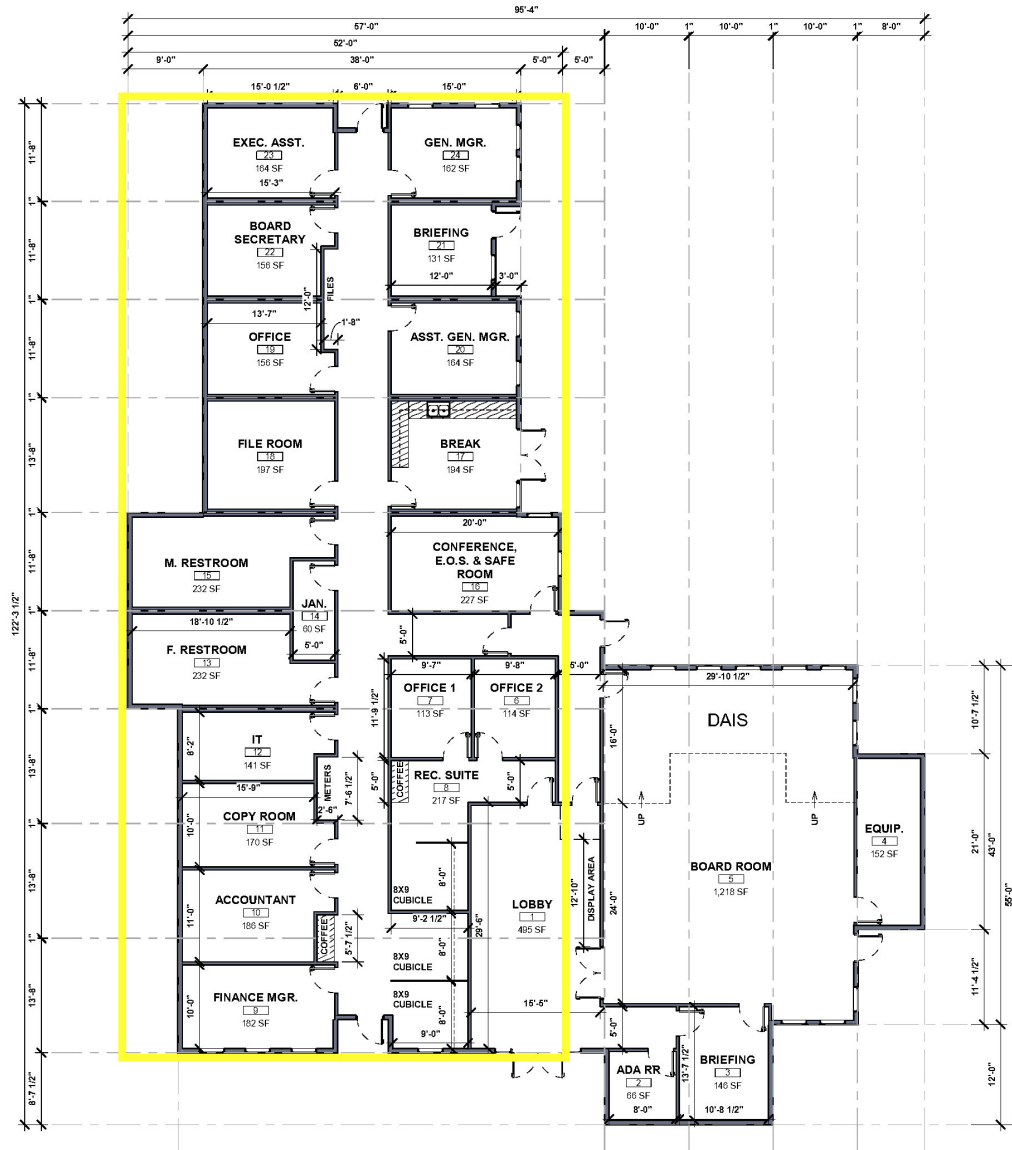


ACCENT SIDING
STONE VENEER

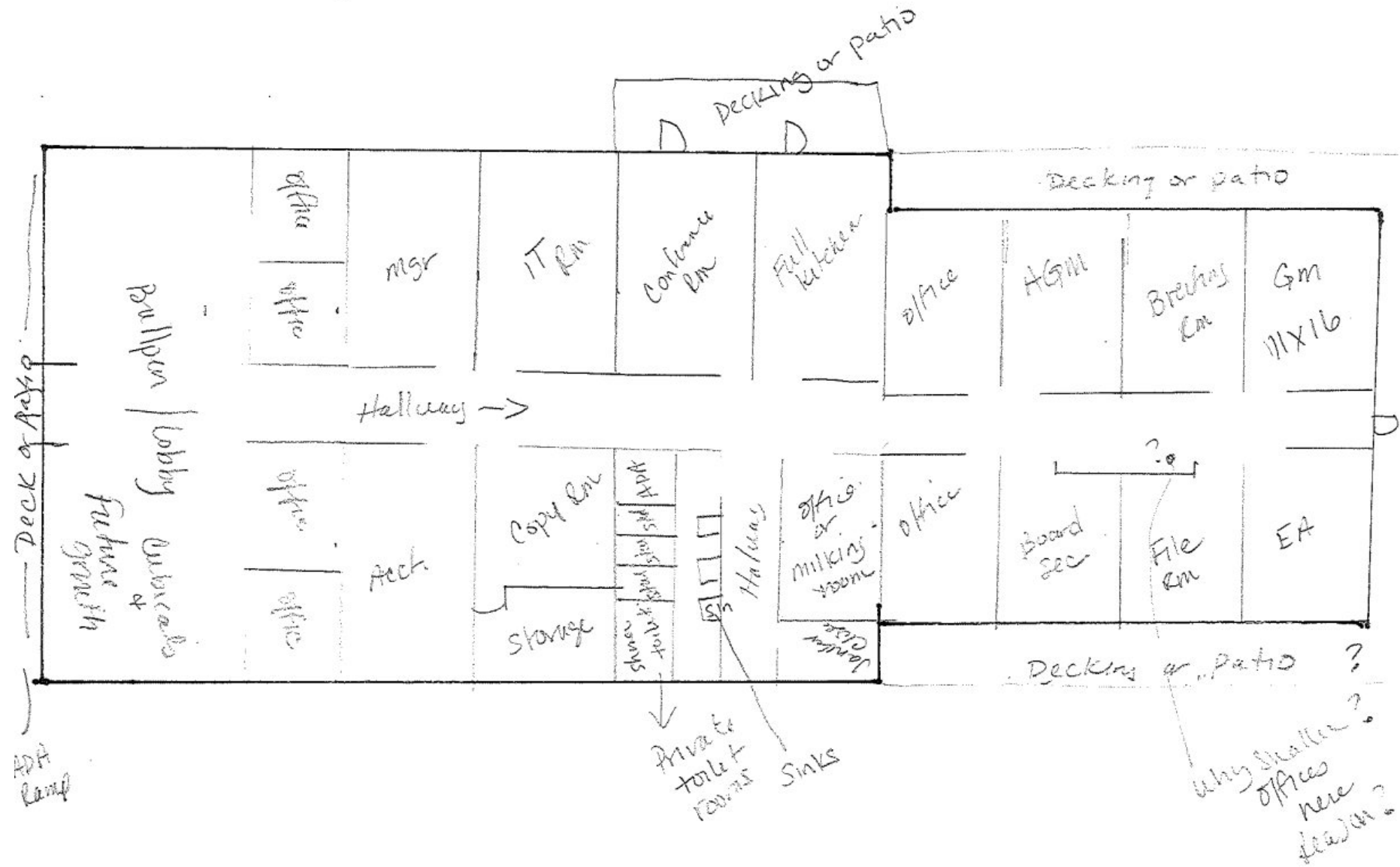
Town of Discovery Bay Offices – Option A Placement on Site



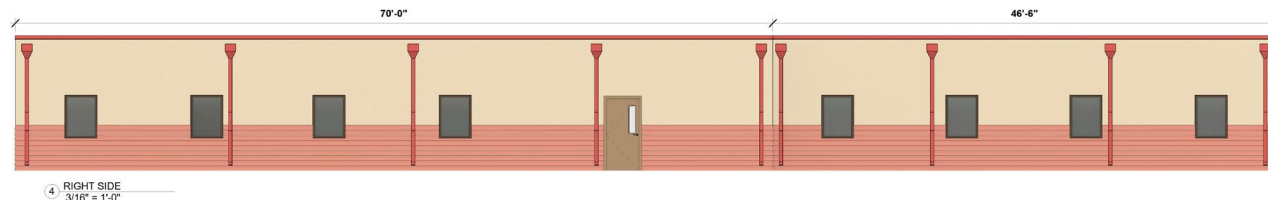
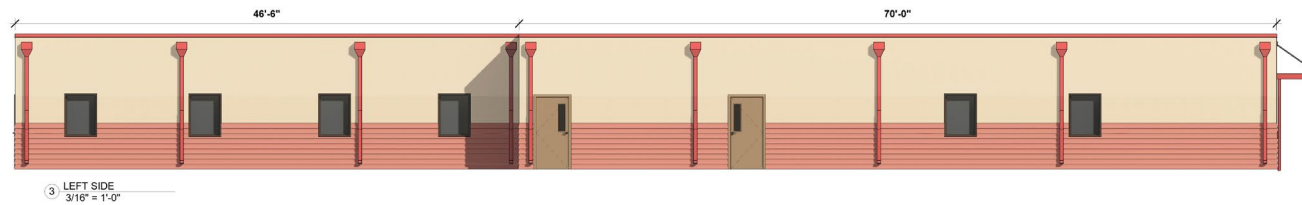
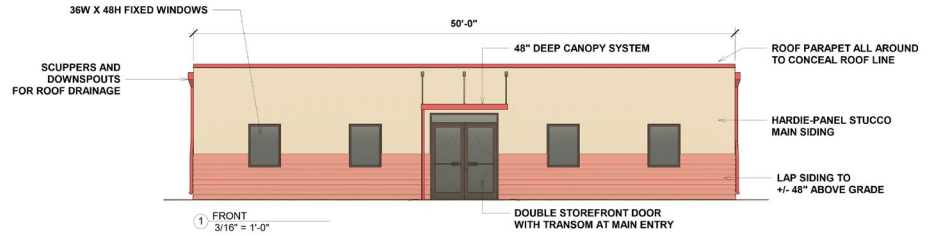
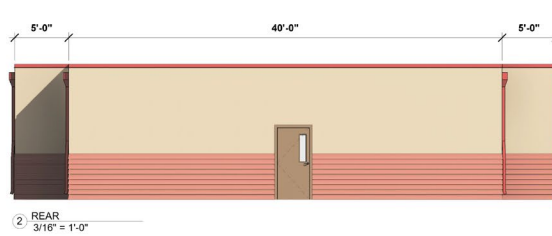
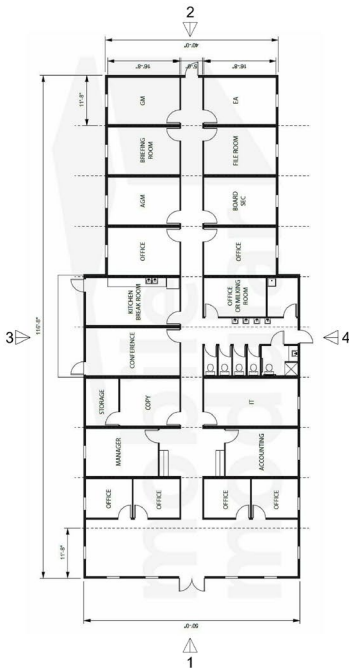
Town of Discovery Bay Offices – Developing Option B



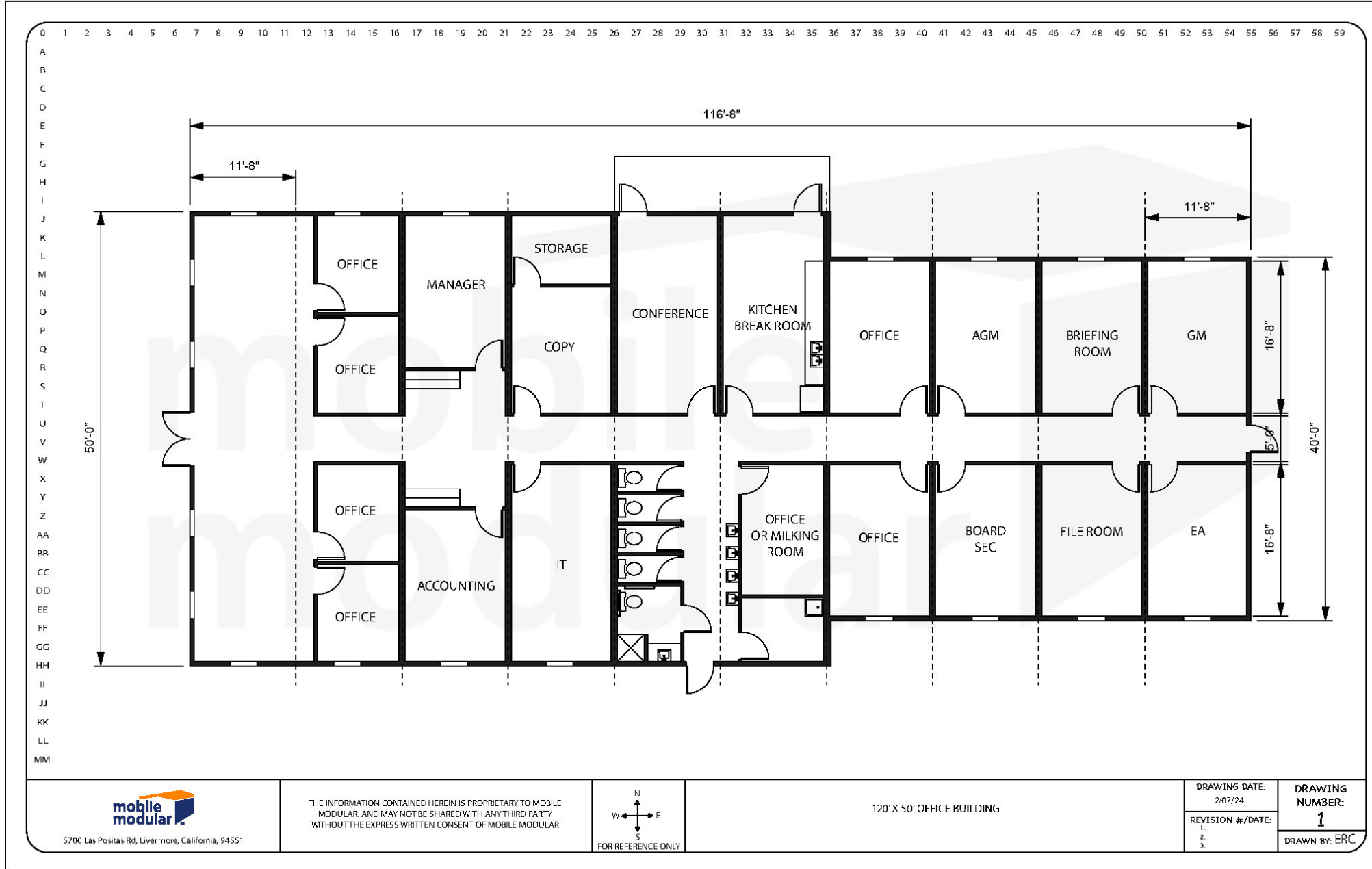
Town of Discovery Bay Offices – Developing Option B



NOTE: RENDERING AND ELEVATIONS DEPICT APPROXIMATE MATERIALS IN A GENERIC LIGHTING CONDITION. FINAL LOOK MAY VARY. PLEASE REFER TO PRODUCT SAMPLES AND COLORS.

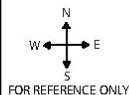


Town of Discovery Bay Offices – Option B



5700 Las Positas Rd, Livermore, California, 94551

THE INFORMATION CONTAINED HEREIN IS PROPRIETARY TO MOBILE MODULAR, AND MAY NOT BE SHARED WITH ANY THIRD PARTY WITHOUT THE EXPRESS WRITTEN CONSENT OF MOBILE MODULAR



120' X 50' OFFICE BUILDING

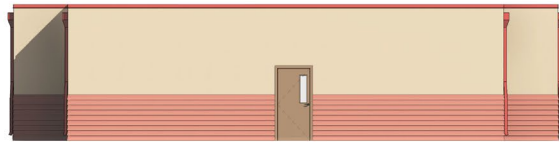
DRAWING DATE:
2/07/24

REVISION #/DATE:
1.
2.
3.

DRAWING NUMBER:
1

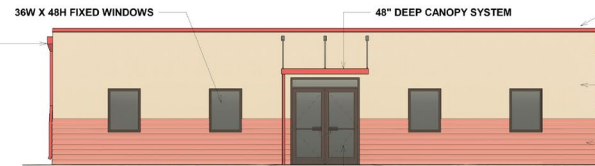
DRAWN BY: ERC

NOTE: RENDERING AND ELEVATIONS DEPICT APPROXIMATE MATERIALS IN A GENERIC LIGHTING CONDITION. FINAL LOOK MAY VARY. PLEASE REFER TO PRODUCT SAMPLES AND COLORS.



1 REAR
3/16" = 1'-0"

SCUPPERS AND
DOWNSPOUTS
FOR ROOF DRAINAGE



2 FRONT
3/16" = 1'-0"

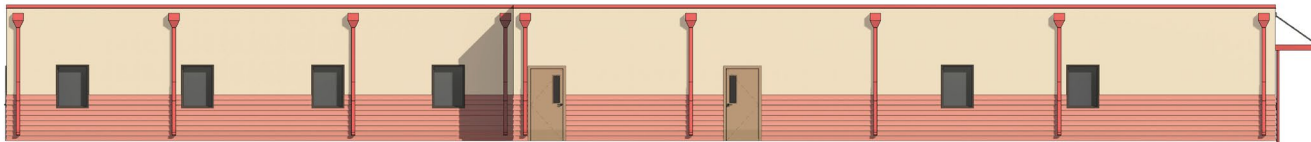
48" DEEP CANOPY SYSTEM

ROOF PARAPET ALL AROUND
TO CONCEAL ROOF LINE

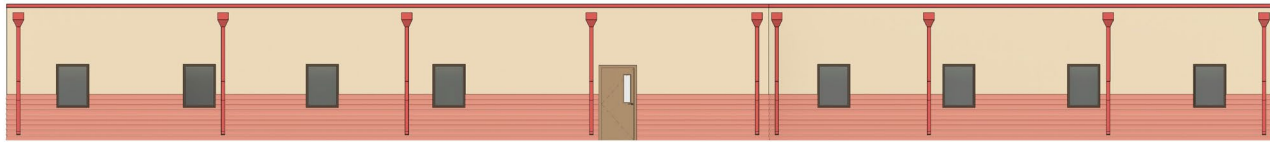
HARDIE-PANEL STUCCO
MAIN SIDING

LAP SIDING TO
+/- 48" ABOVE GRADE

DOUBLE STOREFRONT DOOR
WITH TRANSOM AT MAIN ENTRY



3 LEFT SIDE
3/16" = 1'-0"



4 RIGHT SIDE
3/16" = 1'-0"

Town of Discovery Bay Offices – Option B



Town of Discovery Bay Offices – Option A Placement on Site





Town of Discovery Bay – New Town Modular Office Building - Project Synopsis

Project Goal:

To Provide a cost-effective, Turnkey Modular Solution, to include: Architectural/Engineering/Modular design services, 100% Construction Drawings, Site preparation, Parking lot development, Permitting, Utility connection, landscaping, hardscapes, Trellis/Awnings, life safety systems, and Modular Building Delivery and Installation to include exterior and interior finishing, and furniture if required. Our goal is to provide a complete modular solution to fit your need. All designs to be generated with ADA and Title-24 compliant considerations.

Sequence of Events (Tentative & Non-Exhaustive)

- Design Contract Execution
- Design & Pre-Construction Phase (100% CDs)
 - Evaluation + Planning + Municipality research + AHJ review
 - Modular Building + Component Design
 - Full Site (AVE)
 - Land Use Application
 - Security Fencing & Sound Wall (if required)
 - Life Safety
 - MEP design
 - Low Voltage design
 - Foundation
 - Landscaping + Irrigation Design
 - Permitting
- Site Development & Prep
 - Mobilization
 - General Site Prep & Layout
 - Construction entrance
 - Tree protection
 - Fencing as required
 - Dust Protection
 - Place Dumpsters and Construction equipment
 - Pre-Con Meetings + Site Safety + Site Supervision
 - Demolition
 - Clearing and Grubbing
 - Contour grading
 - Retention / Detention installation
 - Utility lateral routing
 - Rough Grading



- Modular Foundation Installation “Pit” Style
 - Footings
 - Stem Wall
 - Access points
 - Ventilation
 - Moisture Protection
 - Pest Prevention
- Modular Delivery and Installation (some items are subject to power & water added to building)
 - Modular Fabrication
 - Freight units to site & Stage
 - Crane install units onto “pit” style foundation
 - Buildings installed at grade level
 - Weld units onto foundation
 - Fit and Finish Buildings
 - Install Exterior Siding
 - Install complete roofing system
 - Install Signage
 - Deliver furniture
 - MEP crossovers and connections
- Site Finishing + Additional Modular Finishing
 - MEP Utility Connections & Final Install
 - Includes backfill and grading
 - Low Voltage / Data – Comm Installation
 - Life Safety systems Installation
 - Paint Modular interior walls
 - Install Modular flooring
 - Install Modular ceiling
 - Parking Lot Installation
 - Hardscape Installation
 - Finish Grading
 - Trellis / canopy installation
 - Gutter Installation
 - Landscaping
 - Fencing and sound wall installation as required
- Substantial Completion
 - Punch list and repair
 - Final Cleaning
 - Close out process & Documentation