



TOWN OF DISCOVERY BAY

A COMMUNITY SERVICES DISTRICT

SDLF Platinum-Level of Governance



President – Bryon Gutow • Vice President – Kevin Graves • Director – Ashley Porter • Director – Michael Callahan • Director – Carolyn Graham

**NOTICE OF THE SPECIAL MEETING
OF THE PARKS AND RECREATION COMMITTEE
OF THE TOWN OF DISCOVERY BAY
Monday, August 2, 2021
SPECIAL MEETING 4:00 P.M. – 5:00 P.M.**

**NOTICE
Coronavirus COVID-19**

In accordance with the Governor’s Executive Order N-08-21, and for the period in which the Order remains in effect, the Town of Discovery Bay Community Services District Board will hold public meetings via teleconferencing as Board Chambers remain closed to the public.

To accommodate the public during this period of time that the Board’s Chambers are closed to the public, the Town of Discovery Bay Community Services District Board of Directors has arranged for members of the public to observe and address the meeting telephonically.

TO ATTEND BY TELECONFERENCE:
Toll-Free Dial-In Number: (866)848-2216
CONFERENCE CODE: **5193676302**
To view the Agenda and Presentation Materials go to
Agenda Packet and Materials at: www.todb.ca.gov/

Parks and Recreation Committee Board Members

*Chair Bryon Gutow
Vice-Chair Ashley Porter*

SPECIAL MEETING 4:00 P.M.

A. ROLL CALL

1. Call business meeting to order 4:00 P.M.
2. Roll Call.

B. PUBLIC COMMENTS (Individual Public Comments will be limited to a 3-minute time limit)

During Public Comments, the public may address the Committee on any issue within the District’s jurisdiction which is not on the Agenda. The public may comment on any item on the Agenda at the time the item is before the Committee for consideration. Any person wishing to speak will have 3 minutes to make their comment. There will be no dialog between the Committee and the commenter as the law strictly limits the ability of Committee members to discuss matters not on the agenda. We ask that you refrain from personal attacks during comment, and that you address all comments to the Committee only. Any clarifying questions from the Committee must go through the Chair. Comments from the public do not necessarily reflect the viewpoint of the Committee members.

C. DISCUSSION ITEMS


1. Discussion Regarding the Installation of Two (2) Monitoring Wells at Cornell Park.
2. Update on Community Center Pool and Landscaping.
3. Discussion Regarding Contracting with the California Conservation Corps for Landscape Services.

D. ADJOURNMENT

1. Adjourn to the next Standing Parks and Recreation Committee meeting at the Community Center located at 1601 Discovery Bay Boulevard.

"This agenda shall be made available upon request in alternative formats to persons with a disability, as required by the American with Disabilities Act of 1990 (42 U.S.C. § 12132) and the Ralph M. Brown Act (California Government Code § 54954.2). Persons requesting a disability related modification or accommodation in order to participate in the meeting should contact the Town of Discovery Bay, at (925) 634-1131, during regular business hours, at least forty-eight hours prior to the time of the meeting."

"Materials related to an item on the Agenda submitted to the Town of Discovery Bay after distribution of the agenda packet are available for public inspection in the District Office located at 1800 Willow Lake Road during normal business hours."

	<h1 style="margin: 0;">Town of Discovery Bay</h1> <p style="margin: 0;"><i>“A Community Services District”</i></p> <h2 style="margin: 0;">STAFF REPORT</h2>	<p style="margin: 0;">Meeting Date</p> <p style="margin: 0;">August 2, 2021</p>
<p>Prepared By: Luhdorff & Scalmanini Consulting Engineers Submitted By: Michael R. Davies, General Manager</p>		
<p>Agenda Title</p> <p>Discussion Regarding the Installation of Two (2) Monitoring Wells at Cornell Park.</p>		
<p>Recommended Action</p> <p>Recommend that the Board of Directors approve the installation of two (2) monitoring wells at Cornell Park, as indicated in the attached proposed location.</p>		
<p>Executive Summary:</p> <p>The Town of Discovery Bay (“District”) is a Groundwater Sustainability Agency (“GSA”) that draws water from the East Contra Costa Subbasin (“ECC Subbasin”). The District has entered into a Memorandum of Understanding (“MOU”) with 7 other agencies to produce a Groundwater Sustainability Plan (“GSP”), which is required by Sustainable Groundwater Management Act (“SGMA”). Components of the GSP require that the ECC Subbasin be monitored using groundwater monitoring wells.</p> <p>Prop 68 grant funds have been awarded to install multiple shallow monitoring wells in the ECC Subbasin to fill a data gap in monitoring interconnected surface water and groundwater. Candidate sites include Old River, Indian Slough, the San Joaquin River at Antioch, and Bethel Island (see Attachment – Data Gap Target Locations). Indian Slough at Discovery Bay was prioritized due to its setting within the Delta and reliance on pumping from deeper aquifers.</p> <p>In working with Staff, locations were identified within the District’s jurisdiction that are near Indian Slough. Cornell Park was selected as the ideal location for a monitoring well for the purpose of addressing the data gaps. District staff met with LSCE on Cornell Park to review the site conditions and propose a location for the monitoring well (see Attachment: Site Map for New Monitoring Wells at TODB).</p> <p>The monitoring wells will be completed in the shallowest aquifer materials which are connected to surface water bodies. These are shallower than current monitoring well installations in Discovery Bay. Typical monitoring installations consist of a pair of 2” PVC piezometers at 15- and 30-foot depths. At the surface, the monitoring well can be installed flush with the surface, as was desired by Staff at this location (see Attachment: Typical Flush Surface Completion).</p> <p>The following are specific objectives to be met by the project:</p> <ul style="list-style-type: none"> • Increase density of groundwater level monitoring wells in the ECC Subbasin Shallow Zone. • Provide information on surface water and groundwater interconnections and conditions near groundwater dependent ecosystems (GDEs). • Provide information on boundary conditions to increase reliability of sustainable groundwater yield estimates for the subbasin. • Improve understanding of impact of groundwater management to beneficial uses and users. • Improve characterization of groundwater occurrence and flow in the subbasin. <p>Grant funding covers costs for all planning and installation costs, equipment (transducers and dataloggers), and initial sampling and water quality testing. Funding for future monitoring activities will be addressed through the GSP implementation and is currently underway through the GSP Working Group.</p> <p>The data gap analysis, site selection, design criteria and other related information have been available for public review</p>		

and comment through the ECC Subbasin GSP website (<https://www.eccc-irwm.org/sgma>).

LSCE will be available during the Board meeting to answer questions.

Previous Relevant Board Actions for This Item

February 19, 2021 - Authorized Signing of GSP MOU

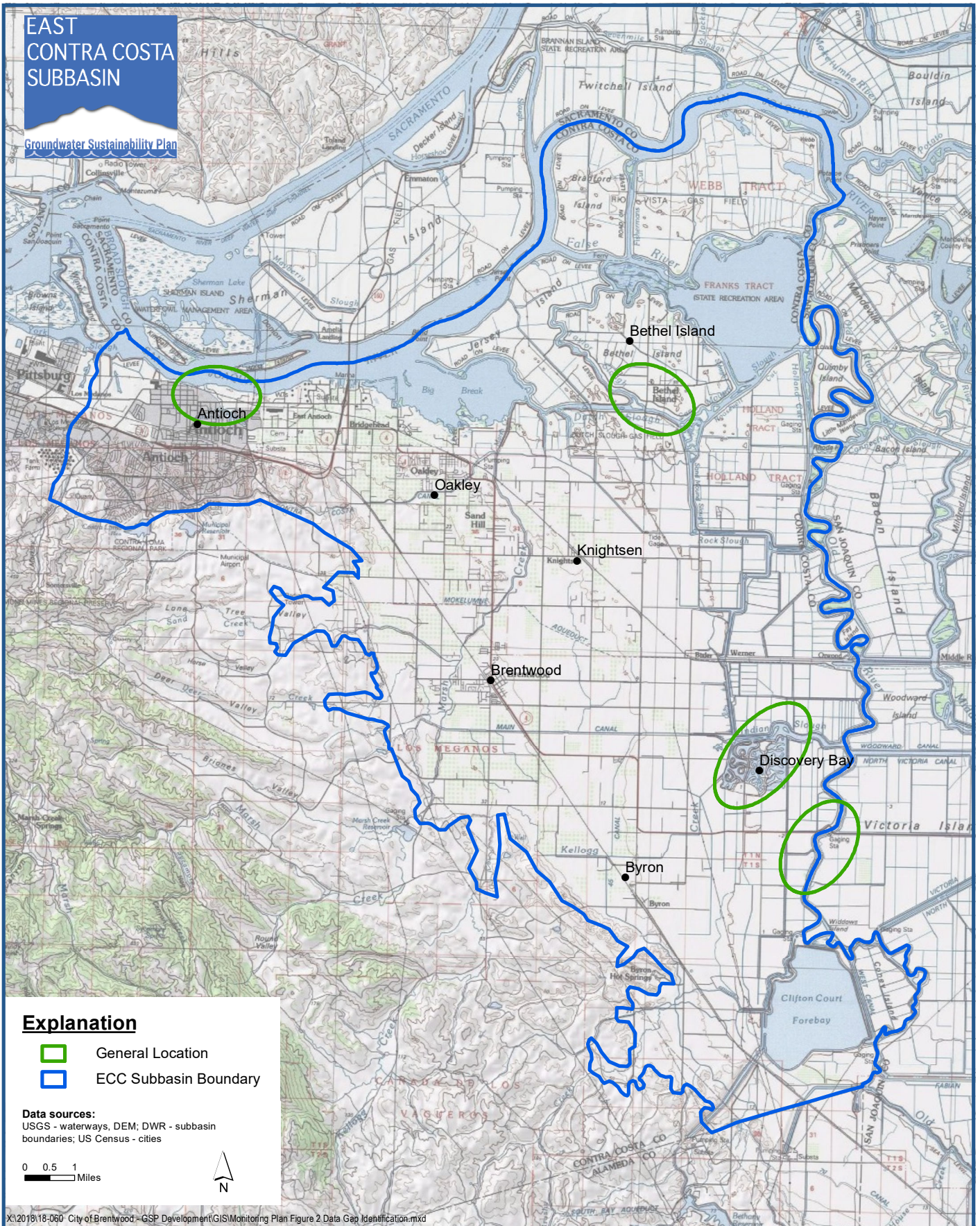
Attachments

1. Data Gaps in the ECC Subbasin
2. Proposed Location
3. Monitoring Well Profile and Surface Completion

AGENDA ITEM: C-1

EAST CONTRA COSTA SUBBASIN

Groundwater Sustainability Plan



Explanation

- General Location
- ECC Subbasin Boundary

Data sources:
 USGS - waterways, DEM; DWR - subbasin boundaries; US Census - cities

0 0.5 1 Miles

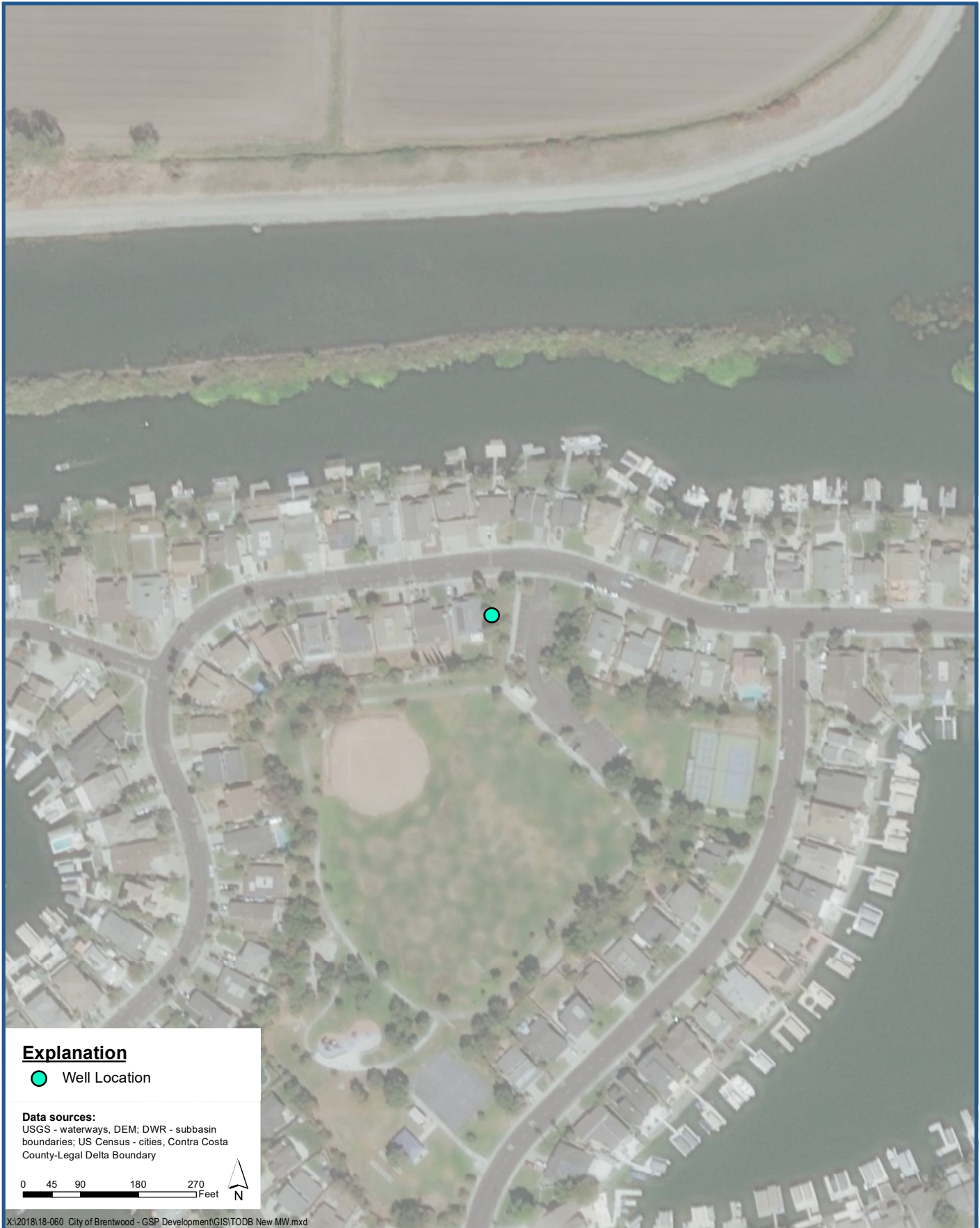


X:\2018\18-060 City of Brentwood - GSP Development\GIS\Monitoring Plan Figure 2 Data Gap Identification.mxd



Data Gap Target Locations

East Contra Costa Subbasin Groundwater Sustainability Plan
 Contra Costa County, California



Site Map for New Monitoring Wells at the Town of Discovery Bay

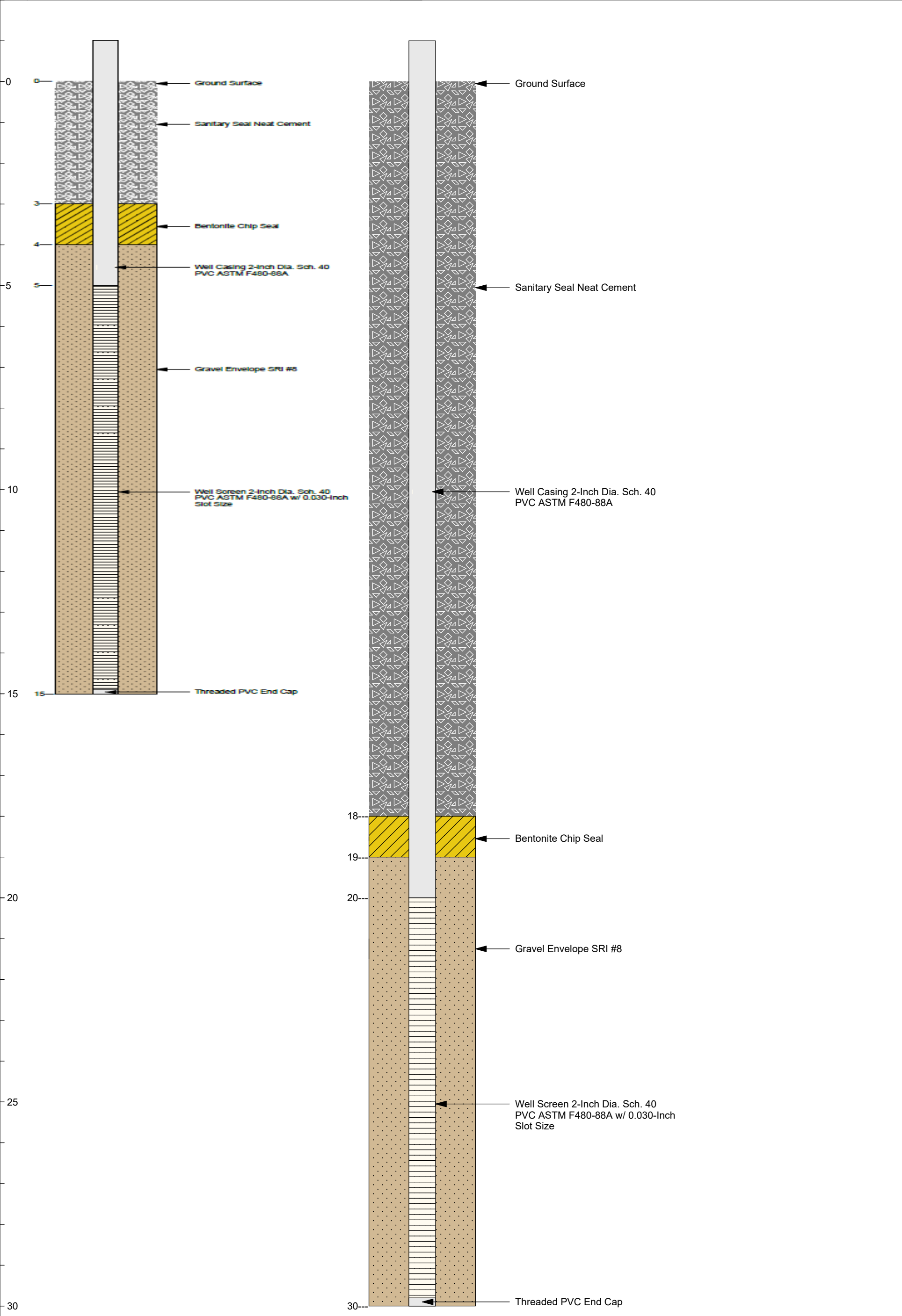
*East Contra Costa Subbasin Groundwater Sustainability Plan
Contra Costa County, California*

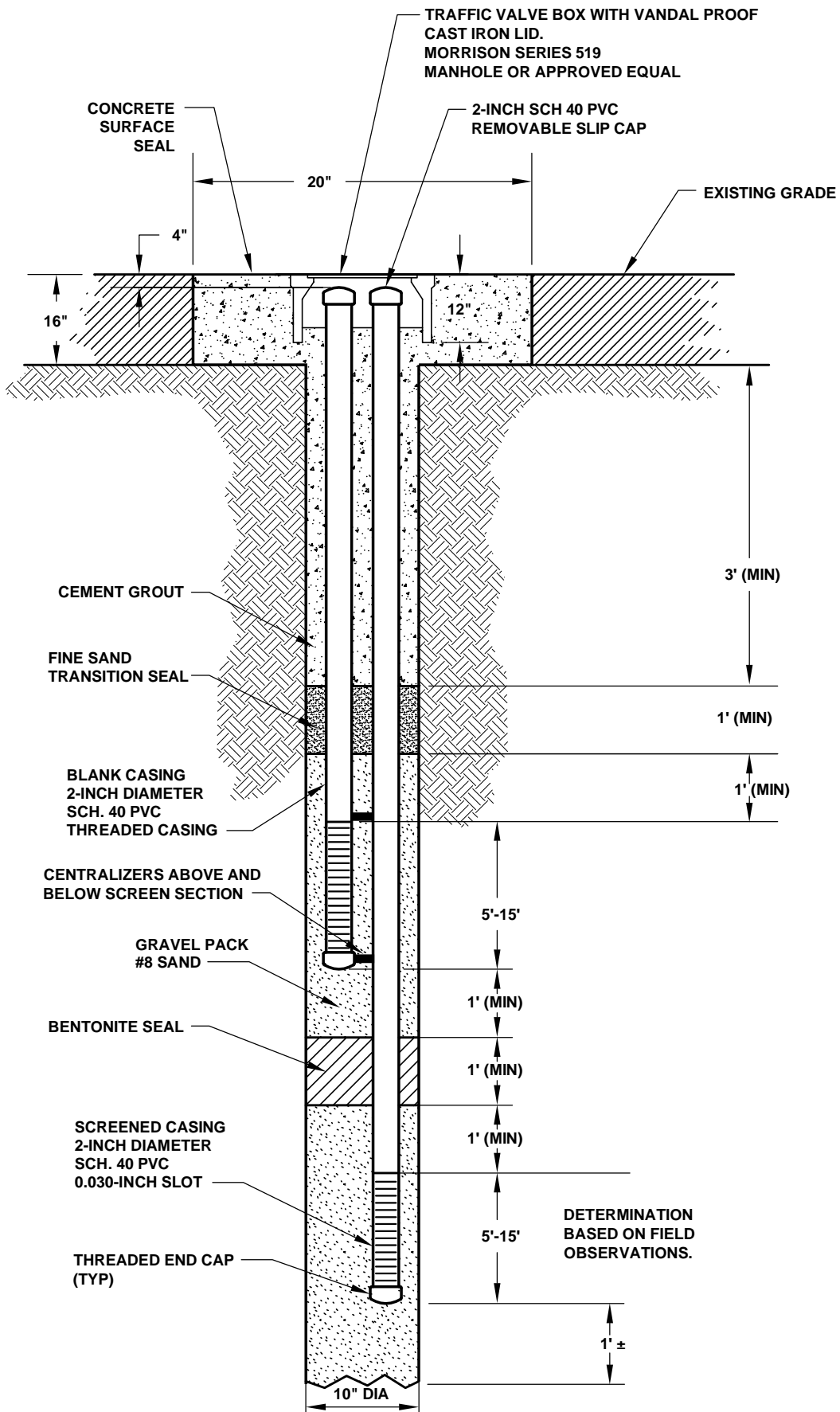
Client: Contra Costa County	Lat/Long: TBD
Project Name: 15' and 30' MW Profiles	GSE (ft-msl) TBD
LSCE #: 20-1-085	Drill Date: TBD
Location: Contra Costa County, CA	Drilling Method: Hollow Stem Auger
Geologist: N/A	Driller: TBD



Luhdorff & Scalmanini
Consulting Engineers

Well Profile





CAD FILE: G:/Projects/Dairy Cares/09-1-075/Figure 22.dwg CFG FILE: LSCE2500.PCP_MRG DATE: 07-21-11 9:49am