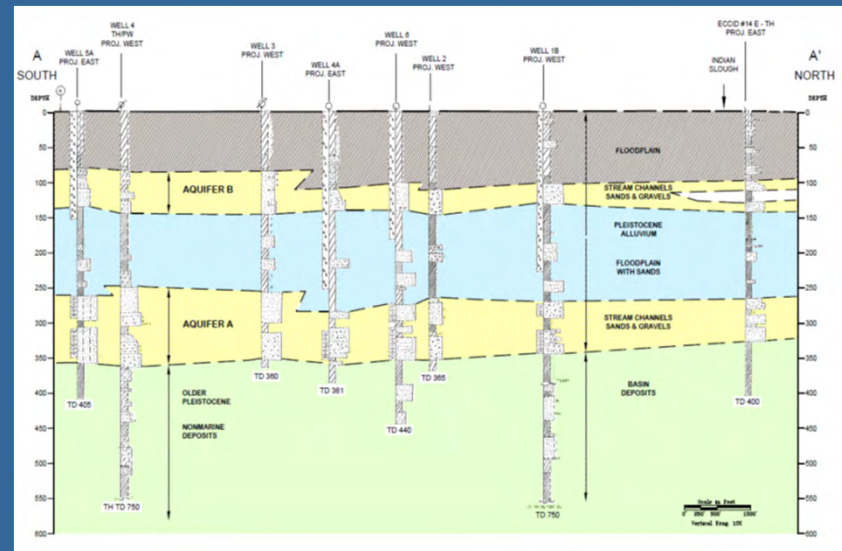
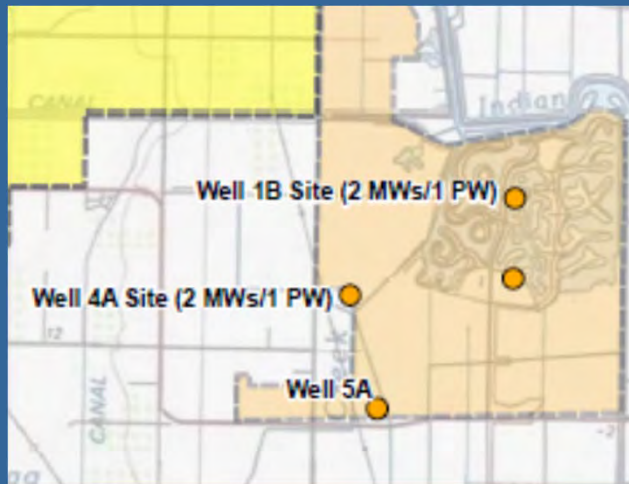


Discovery Bay and Groundwater Source of Supply

Focus for Master Plan/Urban Water Management Plan has been on supply wells and local conditions.



2014 Sustainable Groundwater Management Act (SGMA)

2014 Legislation requires management and planning on a groundwater basin/subbasin scale



Tracy Subbasin



GSA and GSPs under SGMA

1. Requires certain basins to operate under a Groundwater Sustainability Plan (GSP) by 2020 or 2022
 - TODB is within Tracy Subbasin
 - Tracy Subbasin ranked Medium Priority and is required to prepare a GSP
2. TODB should either engage with or form a Groundwater Sustainability Agency (GSA)
3. Guidelines for GSAs and GSPs developed by Department of Water Resources

Other Requirements under SGMA

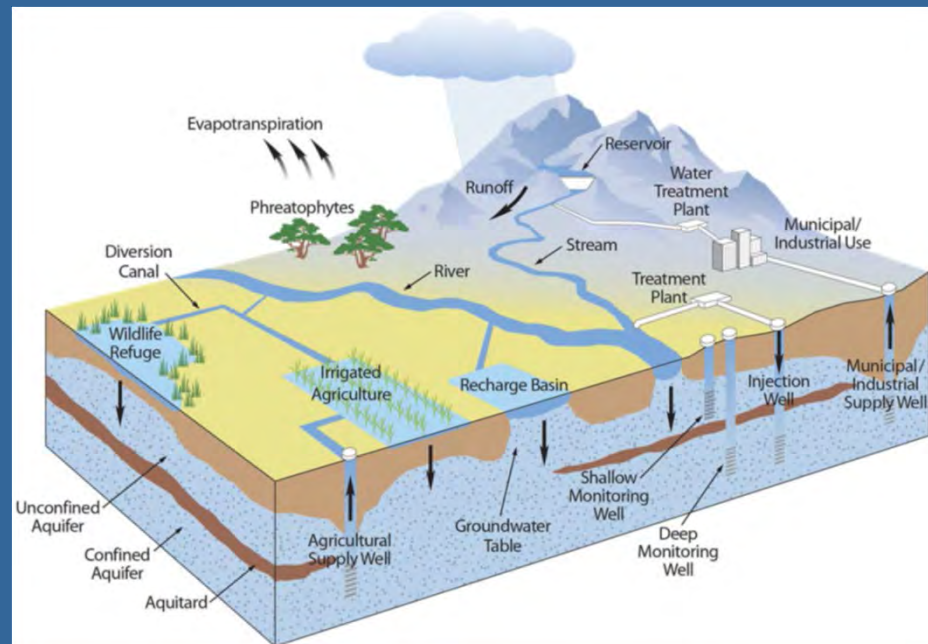
SGMA also requires Inter-basin coordination.

Tracy Subbasin is connected to three High Priority and two Critically Overdrafted subbasins.



SGMA Requires Development of a Water Budget with GSP

Water budget accounts for water inputs and outputs affecting groundwater in storage.



Declining Storage = Overdraft

Most Concern is Critically Overdrafted Basins

East Contra Costa County

If Overdrafted, groundwater will be allocated below historic levels



SGMA and East County Area

Will groundwater be sustainable over 50-year planning and implementation horizon?

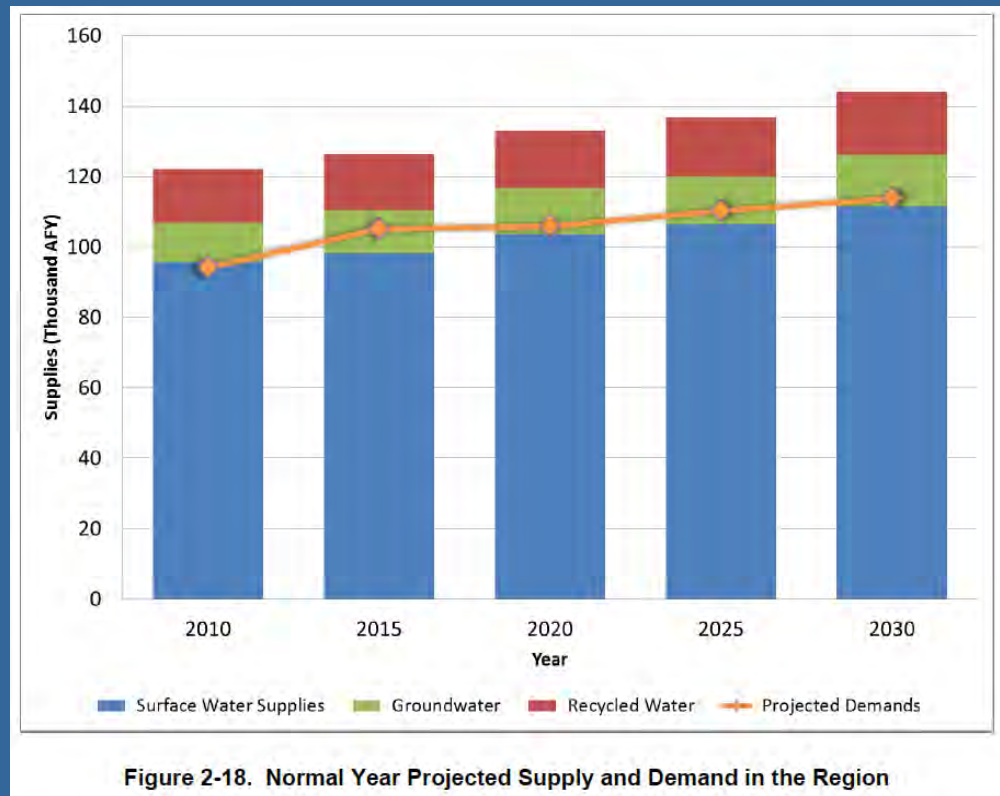


Figure 2-18. Normal Year Projected Supply and Demand in the Region

Groundwater Sustainability Agency (Qualifying Local Agency or Agencies)

10726.4. ADDITIONAL AUTHORITIES OF GSA

- (a) A groundwater sustainability agency shall have the following additional authority and may regulate groundwater extraction using that authority:
- (1) To impose spacing requirements on new groundwater well construction...
 - (2) To control groundwater extractions by regulating, limiting, or suspending extractions from individual groundwater wells or extractions from groundwater wells in the aggregate...
 - (3) To authorize temporary and permanent transfers of groundwater extraction allocations within the agency's boundaries...
 - (4) To establish accounting rules to allow unused groundwater extraction allocations issued by the agency to be carried over from one year to another...

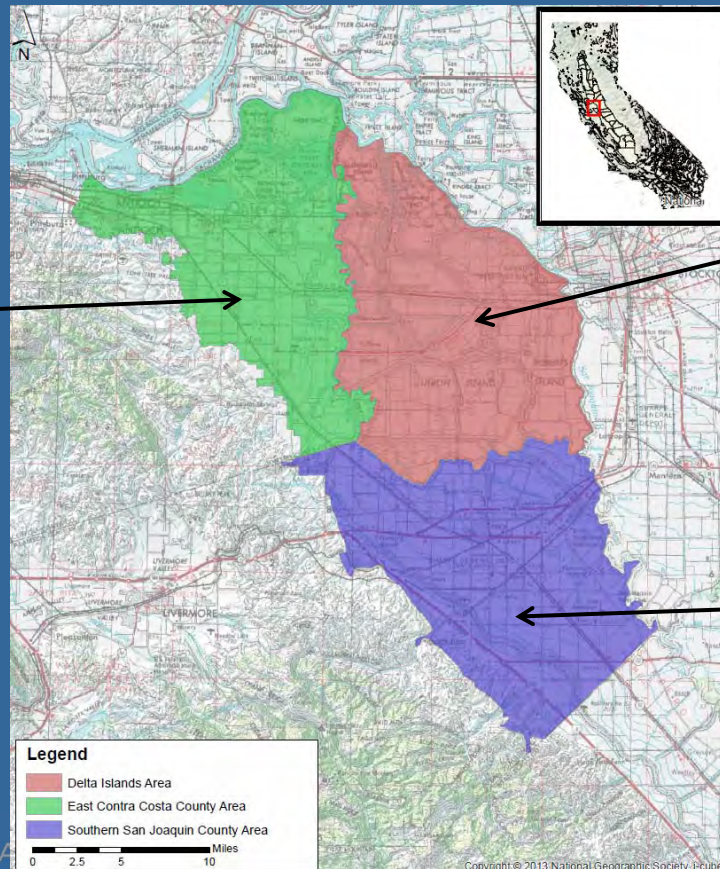
Qualifying Local Agencies

Tracy Subbasin - East Contra Costa County

- Town of Discovery Bay
- City of Brentwood
- Small community systems
- Other private Ag and Domestic pumpers
- Diablo Water District
- Byron Bethany Irrigation District
- East Contra Costa Irrigation District
- Contra Costa County
- City of Antioch

Tracy Subbasin and Subareas Boundaries and Coordination Issues

Contra Costa
County
East County
No Adverse
Conditions +
History of
Coordination
and
Sustainability



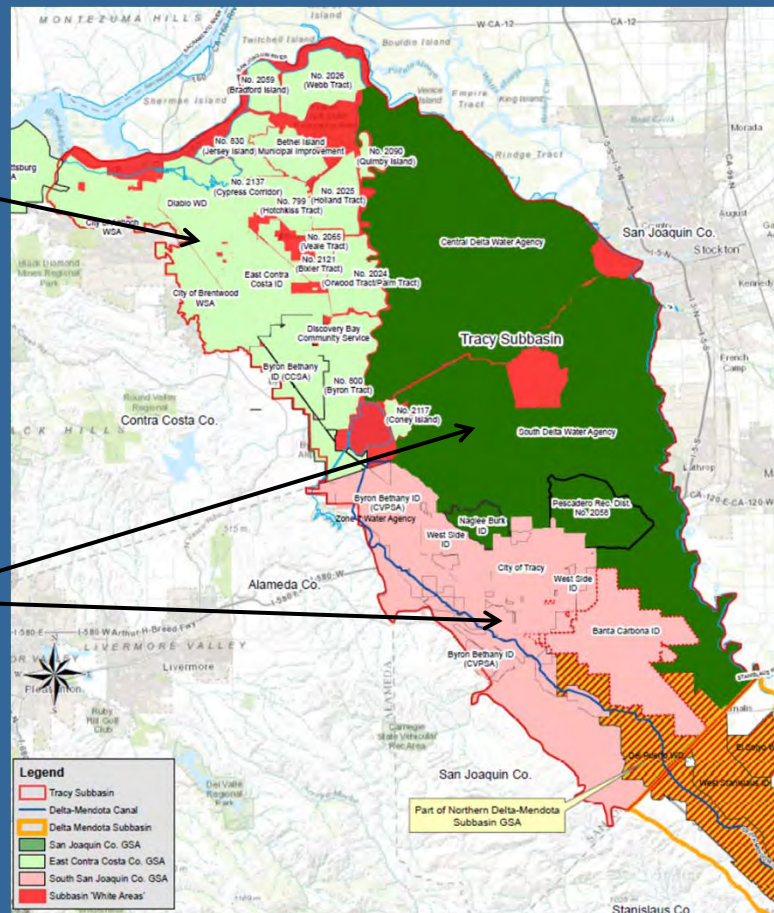
San Joaquin
County
Central Delta
No groundwater
use

San Joaquin
County
Tracy Area
WQ Impacts +
next to
overdrafted
basins

Current Planning Issue GSA Formation

East Contra
Costa County
Water Agencies
as a GSA

San Joaquin
County +
Agencies in
southern Tracy
Subbasin +
Agencies in
Delta-Mendota
Subbasin



GSA Formation and GSP Implementation

By June 30, 2017,

- Either one local agency must be the GSA for the entire basin;
- Or a collection of agencies must form a single GSA or enter into agreements to collectively prepare GSPs for the entire basin, or
- Or some alternative arrangement is approved.

WC 10735.2(a)(1)

By January 31, 2022,

- All basins designated as high- or medium-priority basins that are not subject to critical conditions of overdraft shall be managed under a GSP or coordinated GSPs.

WC 10720.7

Current Groundwater Conditions

