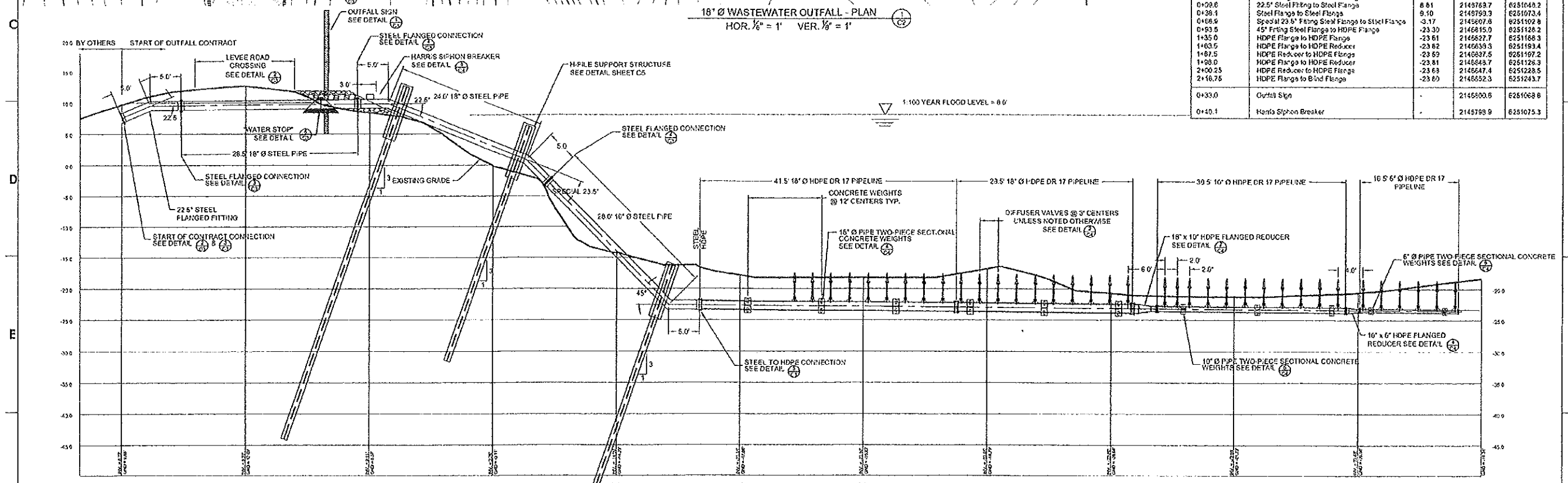


P/A Stations	Description	P/A Northing	Easting	P/A B Northing	Easting
0+44.8	P/A Set #1	2146787.7	6251030.6	2146822.9	6251079.5
0+44.2	P/A Set #2	2146803.5	6251099.1	2146808.8	6251097.5
0+47.3	P/A Set #3	2146810.5	6251121.1	2146815.8	6251119.5

18" Ø WASTEWATER OUTFALL - PLAN
HOR. 1/8" = 1' VER. 1/8" = 1'



Pipe Stations	Description	Invert	Pipeline Northing	Easting
0+00.0	Blind Flange to Steel 22.5" Fitting	6.73	2146783.8	6251037.1
0+02.8	22.5" Steel Fitting to Steel Flange	6.81	2146763.7	6251044.2
0+28.1	Steel Flange to Steel Flange	9.10	2149793.3	6251073.4
0+68.9	Special 23.5" Fitting Steel Flange to Steel Flange	-3.17	2145807.6	6251102.8
0+93.5	45" Fitting Steel Flange to HDPE Flange	-23.30	2146815.0	6251128.2
1+35.0	HDPE Flange to HDPE Flange	-23.61	2145827.7	6251168.3
1+80.5	HDPE Flange to HDPE Reducer	-23.62	2145839.3	6251193.4
1+87.5	HDPE Reducer to HDPE Flange	-23.59	2145837.5	6251197.2
1+98.0	HDPE Flange to HDPE Reducer	-23.81	2146843.7	6251126.3
2+00.25	HDPE Reducer to HDPE Flange	-23.63	2146847.4	6251228.5
2+18.75	HDPE Flange to Blind Flange	-23.60	2146852.3	6251243.7
0+33.0	Outfall Sign	-	2145800.6	6251068.6
0+40.1	Harris Siphon Breaker	-	2145799.9	6251075.3

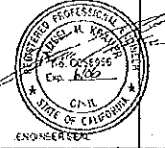
18" Ø WASTEWATER OUTFALL - PROFILE
HOR. 1/8" = 1' VER. 1/8" = 1'

Weight Stations	Size	Northing	Easting
1+01.3	18"	2146817	6251134
1+14.3	18"	2146821	6251145
1+25.3	18"	2146825	6251165
1+37.3	18"	2146828	6251168
1+49.3	18"	2146832	6251179
1+61.3	18"	2146835	6251191
1+71.3	10"	2146839	6251201
1+83.8	10"	2146842	6251212
1+95.8	10"	2146846	6251224
2+02.0	6"	2146848	6251230
2+14.0	6"	2146851	6251241

NOTES:
 1 VERTICAL LAND ELEVATIONS AND RIVER DEPTHS ARE IN FEET REFERENCED TO NGVD 29 DATUM.
 2 HORIZONTAL COORDINATES ARE REFERENCED TO LAD 83 DATUM (CALIFORNIA STATE PLANE COORDINATE SYSTEM - ZONE 3).
 3 INFORMATION ON BENCHMARKS IN THE LOCAL AREA HAS BEEN INCLUDED IN THE SPECIFICATIONS (SECTION 01620).
 4 ALL STEEL PIPE HAS A 0.375" WALL THICKNESS, EXCEPT FOR THAT PORTION CROSSING THE LEVEE ROAD FROM STA. 0+09.8 TO 0+33.1 WHICH SHALL HAVE A WALL THICKNESS OF 0.500".



REVISIONS	DATE	BY	ENG	ENGR.	DESIGN APPROVED
7					EXCEPTIONS
6					APPROVED BY DATE S/GH
5	100% Design Submission	Apr 23, 2004	BAR	WHD/DR	DESIGN ENDS
4	90% Design Submission	Apr 11, 2004	BAR	WHD/DR	ASSIST. ENDS
3	50% Design Submission	Apr 12, 2004	BAR	WHD/DR	REVIEW ENDS
2	30% Design Submission	Apr 6, 2004	BAR	WHD/DR	
1					



TOWN OF DISCOVERY BAY COMMUNITY SERVICES DISTRICT
 18" Ø SANITARY SEWER OUTFALL PLAN AND PROFILE

DRAWN: BAR
 DATE: JUNE 2004
 PROJ # 03345A031
 C2

CONFIRM UNDERGROUND LOCATION WITH UTILITY COMPANIES